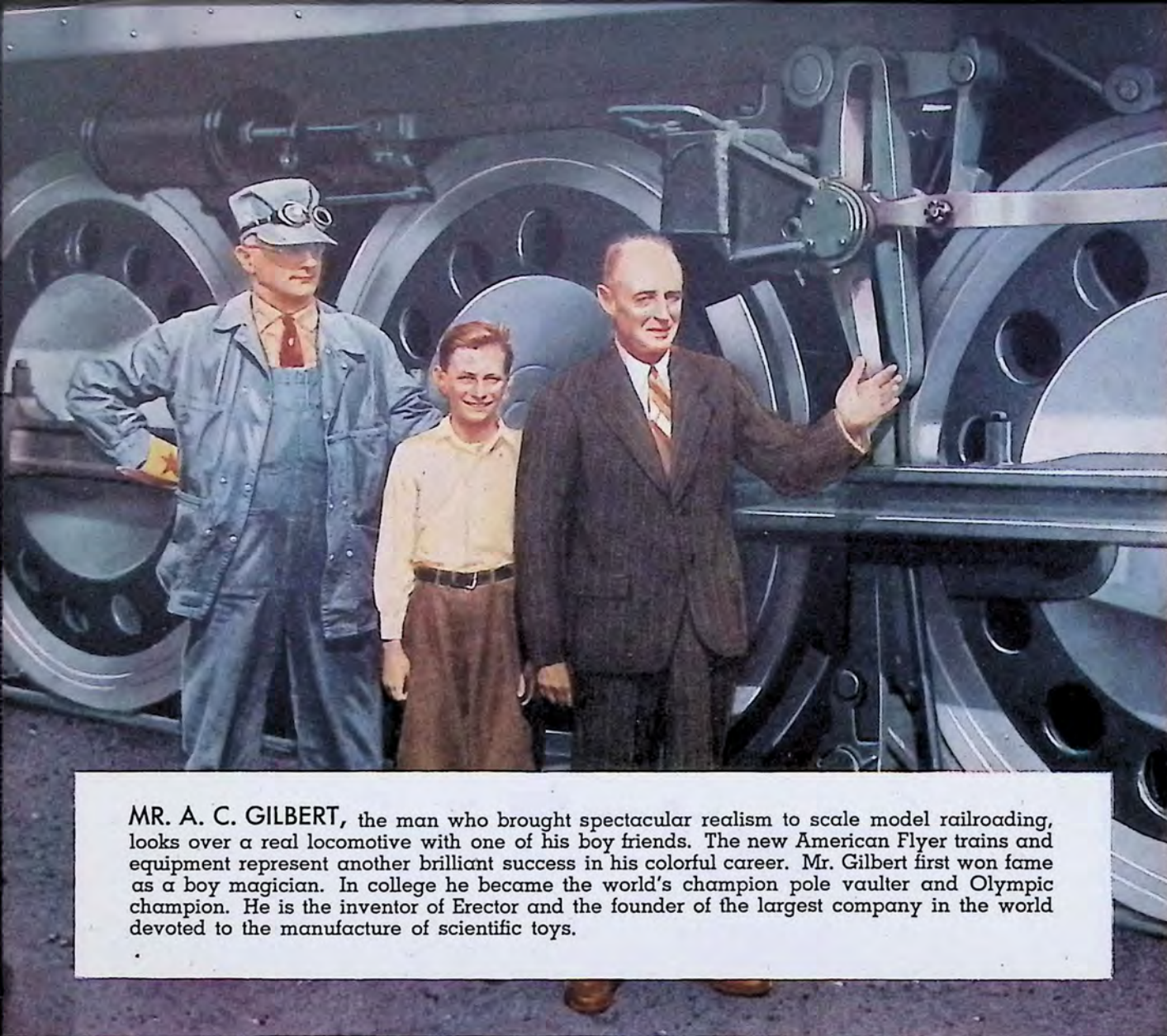


*Railroading with* **AMERICAN FLYER**



Developed at the GILBERT HALL OF SCIENCE





MR. A. C. GILBERT, the man who brought spectacular realism to scale model railroading, looks over a real locomotive with one of his boy friends. The new American Flyer trains and equipment represent another brilliant success in his colorful career. Mr. Gilbert first won fame as a boy magician. In college he became the world's champion pole vaulter and Olympic champion. He is the inventor of Erector and the founder of the largest company in the world devoted to the manufacture of scientific toys.

**T**HE romance of railroading never fails to stir our imagination. Every heart vibrates to the tumultuous roar of the rails.

You sense the wonder and glory of railroading when you stand on a station platform and a giant locomotive blows its hot breath upon you. You feel it again in the countryside when you see a crack limited pounding down the main — smoke streaming from its stack — its whistle echoing and re-echoing in the distance.

Today, you can capture the mystic pageantry of railroading in your own home. Direct its

exciting action with your own fingers. Enjoy its stirring adventure every day.

From the famous Gilbert Hall of Science now come a fleet of brilliantly engineered trains and a wide range of equipment that carry scale model railroading to new heights of realism and add to it new pleasure and fascination.

Picture yourself at the magic controls of a modern American Flyer railroad system. At your finger tips are the throttles that operate your trains, and an array of remote control push buttons for manipulating your whistle, automatic loading and unloading equipment and all the other spectacular things that make an up-to-the-minute railroad.

# SCALE MODEL RAILROADING

BROUGHT TO NEW HEIGHTS OF REALISM BY

# AMERICAN FLYER

*Thrilling Action! Never-Ending Fun! Spectacular Drama!*

BY A. C. GILBERT

Founder of the Gilbert Hall of Science and President of The A. C. Gilbert Company

Stretching out in front of you is a maze of gleaming tracks, sidings, switches and crossovers. Spotted over the landscape are massive bridges, yawning tunnels, colorful stations, crossing gates, yard equipment and other picturesque railroad properties.

"All aboard!" Let's see some action.

Slowly you open your throttle and a train starts to snake out of a station. You open it wider . . . to 30 scale miles per hour . . . 50 . . . 80 . . . 100 or more.

How realistic it looks and sounds. Mighty wheels thundering over the rails. Gleaming piston rods flashing back and forth like the arms of prize fighters. A long leash of sleek cars rocking and swaying in tempestuous motion. American Flyer craftsmen have overlooked nothing to make this crack highliner a perfect replica of a real train.

### *The Fun Is Just Starting*

Now for some really dramatic action. Again you open your throttle and a second train moves forward — possibly from a siding. As it crawls toward the main line, you notice the switch is closed. Quickly you pull one of those magic

control levers. The switch opens and your train majestically rolls out into the main iron.

Now you have two trains running on the same track. Here, indeed, is exciting, spectacular action . . . action that will make your blood tingle.

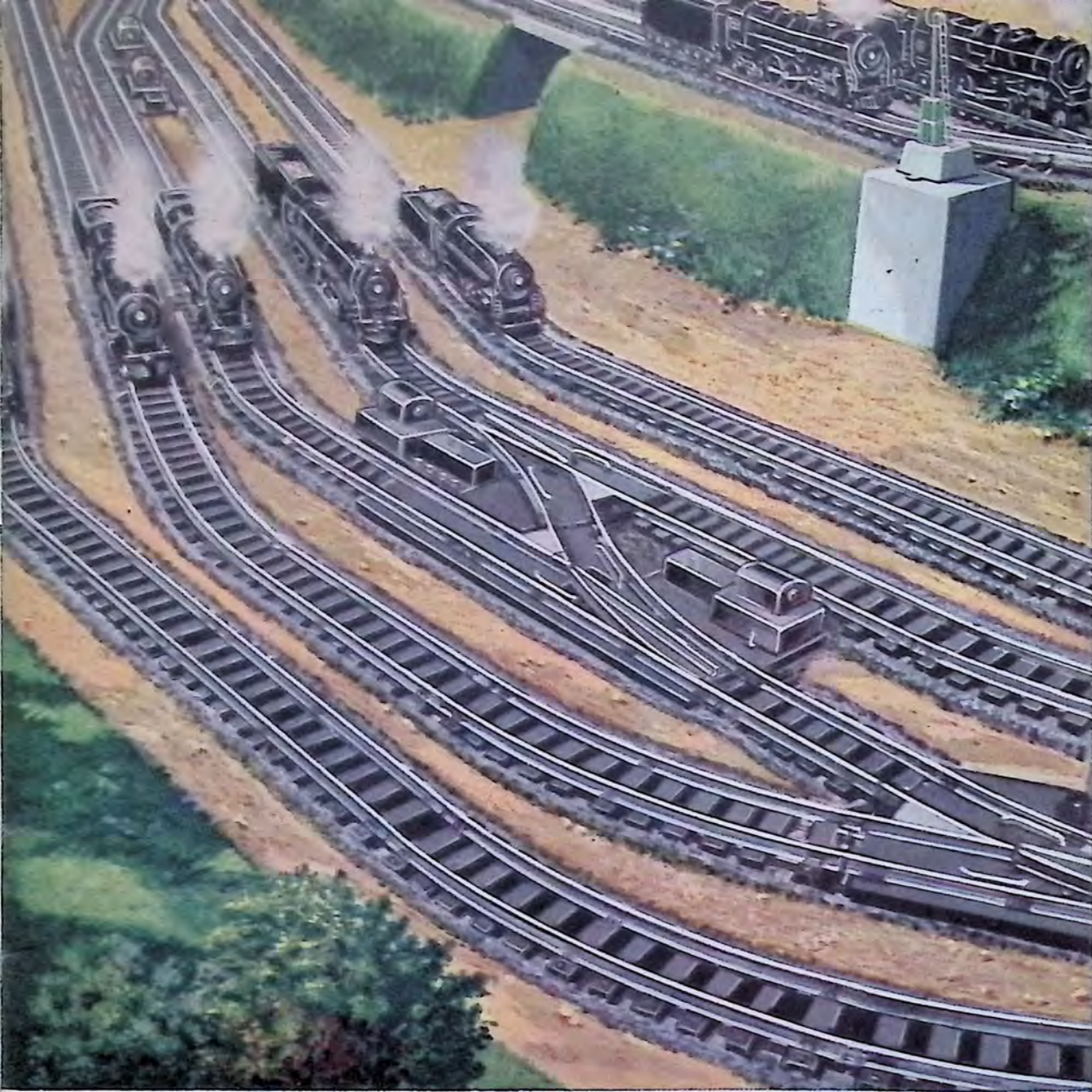
"But what," you may ask, "prevents a collision?"

Well, if you are a good railroad man, your railroad will be equipped with a "block system" — just like a real railroad. As the rear train approaches the block occupied by the first train, your semaphore flashes red, and automatically stops the rear train. When the block is clear, your semaphore flashes green, and your train automatically resumes its run.

### *More Fun And Action*

But more wonders are in store for you. By simply manipulating throttles, levers and push buttons you can duplicate the full drama of real railroading.

You can make trains run forwards or backwards — uncouple one, two or more cars at a time — recouple them anywhere. You can dump a load of coal, logs, or metal—then load the cars again by means of marvelous automatic loading units operated by remote control.



# MAKING YOUR RAILROAD "JUST LIKE REAL"

AMERICAN FLYER brings you the latest and most sensational developments



All American Flyer trains and equipment are designed and built to give you the thrill of owning a railroad system that is fully and correctly realistic. And your pride in the realistic appearance of your railroad will be further increased when you surround it with special scenic effects which you can easily build yourself: mountains, trees, green fields, lakes, roads, buildings, etc.

At night you can turn off the house lights and enjoy the eerie thrill of seeing your highliners surge through the darkness. The locomotive headlight casts its penetrating beam on the shining rails ahead—Pullmans flash by with lights twinkling from every window—the light

from the caboose blinks its farewell in the distance. Lights from stations, bridges and water tower add to the awesome magic of the scene.

No other hobby brings you such spectacular sights and sounds and such exciting action as scale model railroading. You can enjoy its thrills every day of the year—rain or shine—winter or summer—night or day. And you will constantly be discovering new ways to make up your trains, expand your trackage and arrange your equipment.

*A.C. Gilbert*

**N**OTHING is so important in planning your railroad system as to make it "just like real."

There are good reasons why American Flyer trains and equipment are outstanding both for realistic appearance and realistic operation. First, they are developed at the Gilbert Hall of Science, the greatest technical laboratory of its kind in the world. Engineers of the Gilbert Hall of Science perfected 3/16" scale model trains. They invented the electromatic crane and the first locomotives that "choo-choo" and give off smoke.

Equally important, Gilbert craftsmen are trained to precision manufacturing standards as fine as .0002 of an inch—one-tenth the diameter of a human hair. That's why American Flyer trains are such marvels of fine workmanship.

Of course the correct starting point in choosing a railroad system is to make sure that everything is made to authentic scale. Every boy who has built model airplanes knows that a realistic model must be a scale model.

All American Flyer locomotives, tenders, cars and track are built to 3/16" scale. This means that for every foot of real railroad height, width or length, the American Flyer replica measures 3/16".

All American Flyer equipment is likewise built to one standard uniform scale. Thus, your bridges, stations, automatic loading equipment, etc. are in correct proportion to each other.

By making your railroad 100% American Flyer, you have the proud satisfaction of knowing that it is 100% scale model—100% realistic.

## HOW TO PLAN AND BUILD A MIGHTY RAILROAD EMPIRE

THE natural goal of every scale model railroader is to have a mighty railroad empire. Send sleek trains roaring into a dark tunnel . . . hear the muffled noise of their "choo-choos" beating against the walls . . . then see the locomotive reappear at the other end engulfed in a cloud of smoke. Have big freight yards where cars are loaded with spectacular automatic equipment — make up trains and hustle them over a maze of tracks to their destination — uncouple and unload cars by remote control.

Here is fun that will last you all the days of your

★ Hills and mountains — with tunnels for your trains — add enormously to the realism of railroading with American Flyer. The first step is to make a suitable frame work. Plywood is excellent for the purpose.

★ The second step is to cover the frame work with fine wire mesh, shaping it to form interesting and natural-looking contours. Include one or two highways in your plan, flattening the mesh to a suitable width.

★ Next, mix asbestos plaster with water and apply it to the mesh, giving hills and mountains the desired shape. When dry, paint with water mix paints, using blends of blue, yellow and brown.

★ For the finishing touches, trees can be made of twigs dipped in shellac. Grass can be simulated by dyeing sawdust green, then sprinkling it over wet paint. You can make a lake by painting glass blue-green on the under side.



life. So—right now—why not plan to build a complete American Flyer system? You don't have to do it all at once. Much of the joy of scale model railroading lies in planning ahead and adding new things one by one.

The first step is to pick a partner. A boy's Dad is always a fine choice because operating a railroad together is a sure-fire way to get close to Dad. Or perhaps an Uncle, Grandfather or some of the boys in your neighborhood would like to team up with you.

The next step is to select a suitable location for your railroad. A basement is usually an ideal loca-

tion, though in some homes an attic is just as good or better. Tables about 30" high make the best foundation for your railroad system and can be made of lumber you may have on hand, or plywood.

Thanks to the fact that all American Flyer trains and track are built to 3/16" scale, an amazingly realistic and complete system can be built in comparatively small space. This in itself is a very practical and important reason for choosing American Flyer.

The minimum track diameter required for American Flyer is only 40", so that your table need not be over 46" wide. But if space permits, a table width

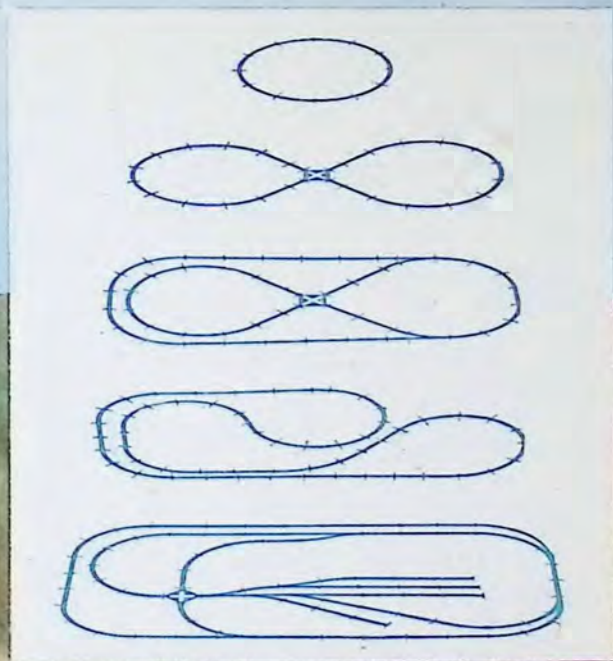
of 5 or 6 feet is recommended, to allow space for sidings, stations, loading equipment, etc.

Your first layout can very well be about 6 x 10 feet. In such a space you can lay sufficient track for the operation of two trains and also have room for a splendid assortment of equipment. From this you can expand to a large rectangular layout such as illustrated on this page, or to a narrow L-shaped layout around the walls.

Further information on building your system and giving it spectacular realism is given in the Instruction Manual that comes with every American Flyer Train set.

### Make Your System Grow . . . Month After Month . . . Year After Year

These track blueprints show how you can start with a single loop — and keep adding track, switches and crossovers until you have the scale model railroad of your dreams.



# AUTHENTIC 2-RAIL TRACK

*Built to 3/16" Scale*

Looks Like a Real Right-of-Way

**PERMITS MULTIPLE TRACK LAYOUTS  
IN SMALL SPACE**

**N**O scale model railroad can look truly realistic unless the track consists of only the two rails on which the wheels run.

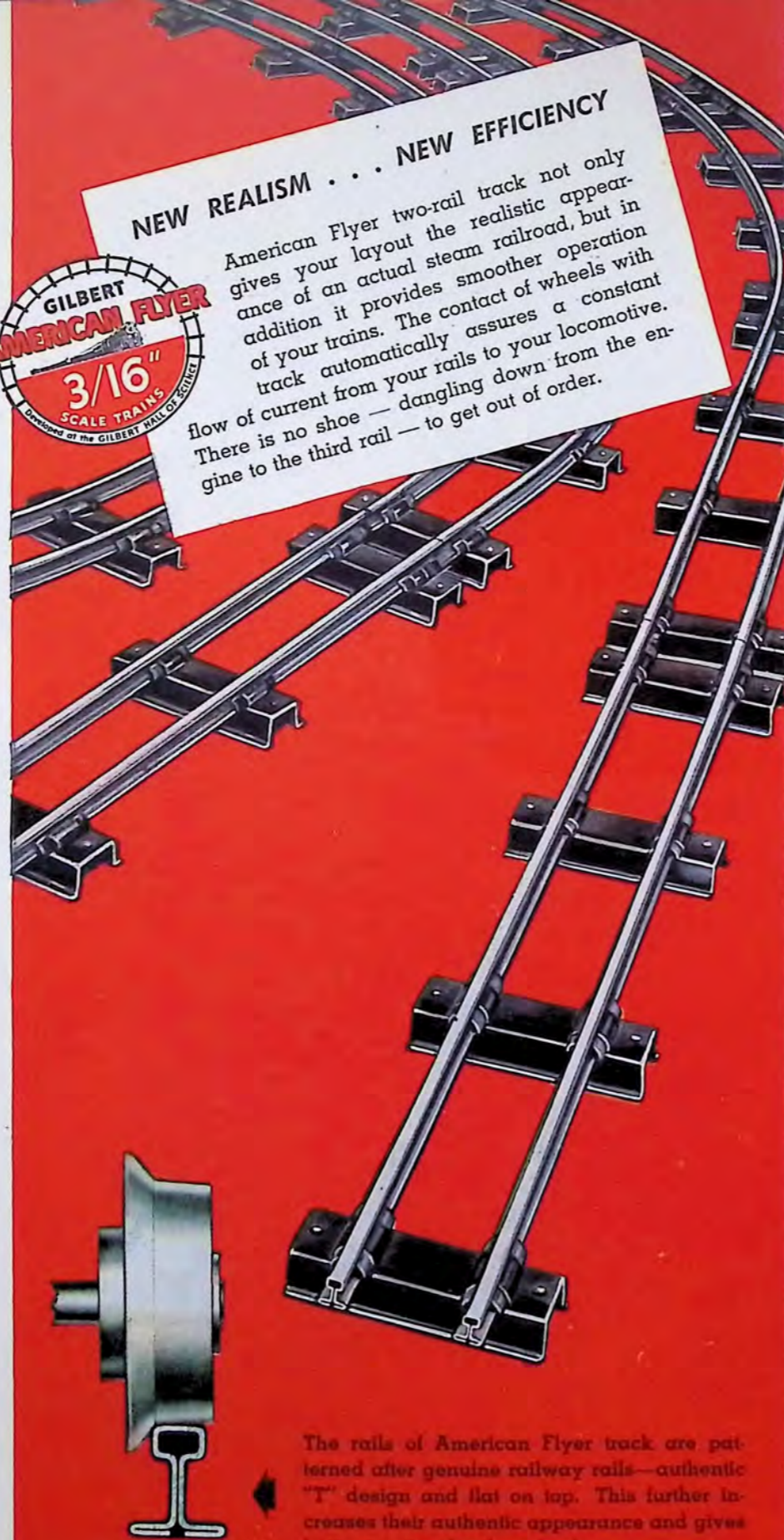
Heretofore standard tracks for electric trains have had a third rail, located in the middle, to carry the electric current. Only the most expensive scale model sets could boast an authentic two-rail track. Also, the locomotives had to be specially engineered to operate on two-rail track.

Today all American Flyer trains are designed to carry the electric current through the wheels, making possible the use of authentic two-rail track. Now, for the first time, scale model trains with this superb realistic feature cost no more than sets with old-fashioned third rail track.



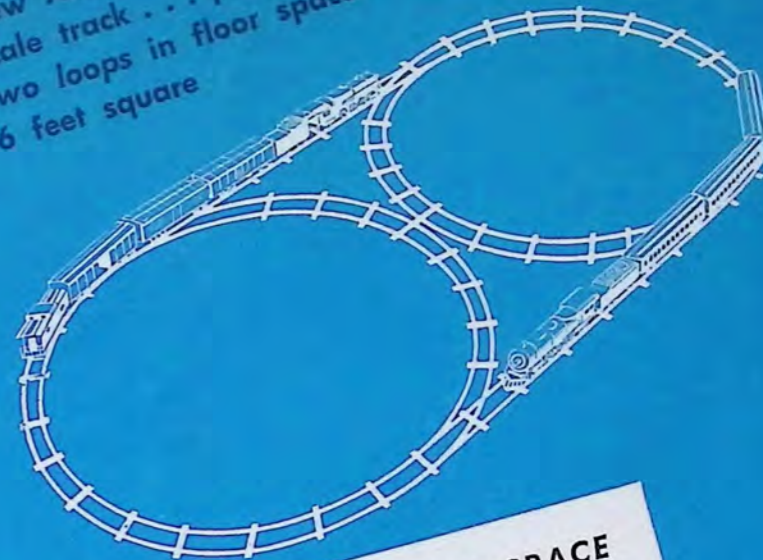
## NEW REALISM . . . NEW EFFICIENCY

American Flyer two-rail track not only gives your layout the realistic appearance of an actual steam railroad, but in addition it provides smoother operation of your trains. The contact of wheels with track automatically assures a constant flow of current from your rails to your locomotive. There is no shoe — dangling down from the engine to the third rail — to get out of order.



The rails of American Flyer track are patterned after genuine railway rails—authentic "T" design and flat on top. This further increases their authentic appearance and gives better traction for the wheels.

New American Flyer 3/16" scale track . . . permits two loops in floor space 6 feet square



## MORE TRACKAGE IN LESS SPACE

An important reason why American Flyer is built to 3/16" scale is that this size is large enough to look impressive yet small enough to fit into a reasonable floor space. The minimum track diameter required for American Flyer is 40", whereas "0" gauge scale model trains and track require a diameter of 72". This means that a track layout that would have to be spread over 16 square yards with "0" gauge track, can be fitted into a space of 9 sq. yds. with American Flyer track.



Old style "0" gauge track . . . permits only one loop in floor space 6 feet square



100% REALISTIC

Sound

AND

Smoke

EFFECTS!

Hear 'em "Choo-Choo"

Watch 'em Belch Smoke

Listen To That Whistle

Thrilling exclusive features  
originated by American Flyer

**REAL SMOKE RIGHT FROM THE  
THE SMOKE STACK**

No, there's no fake about that smoke. It comes in billowing waves right out of the stack, adding a crowning touch of realism to railroading with American Flyer. But that's not all. So ingeniously is this marvelous new device engineered that the smoke varies in intensity with the speed of your train. Slow, lazy wisps when your engine idles . . . heavier gusts when it picks up speed . . . and long streamers of realistic smoke when your train is rolling along at 75.



**MOTHER!**

Don't worry about that smoke injuring your draperies. American Flyer scientists have developed a secret formula that looks like smoke but does not smudge up your walls or draperies.

**"CHOO-CHOO" — THEY SHOUT**

American Flyer trains not only look like real but also sound just like real. Their built-in "choo-choo" reproduces the tempestuous rumbles and hisses of a giant locomotive under full steam. So distinct are these "choo-choos" they can be heard at distances of over 100 feet. And they change tone and tempo with every change in train speed. Slow, impatient "choo-choos" when your train is standing at a station . . . a fast, furious cascade of "choo-choos" when you give her the highball signal.



**WHISTLING BILLBOARD**

The American Flyer whistling billboard gives you two features for the price of one. It is both a whistle and a billboard that adds realism to your track layout. Whistle blows automatically every time your train passes over the automatic track trip — or you can sound it any time by pressing the remote control button. Its deep-throated tone will stir the heart of every railroad man. Blows long or short blasts, so that it is perfectly suited for code signals.



WHOO  
WHOO  
WHOO



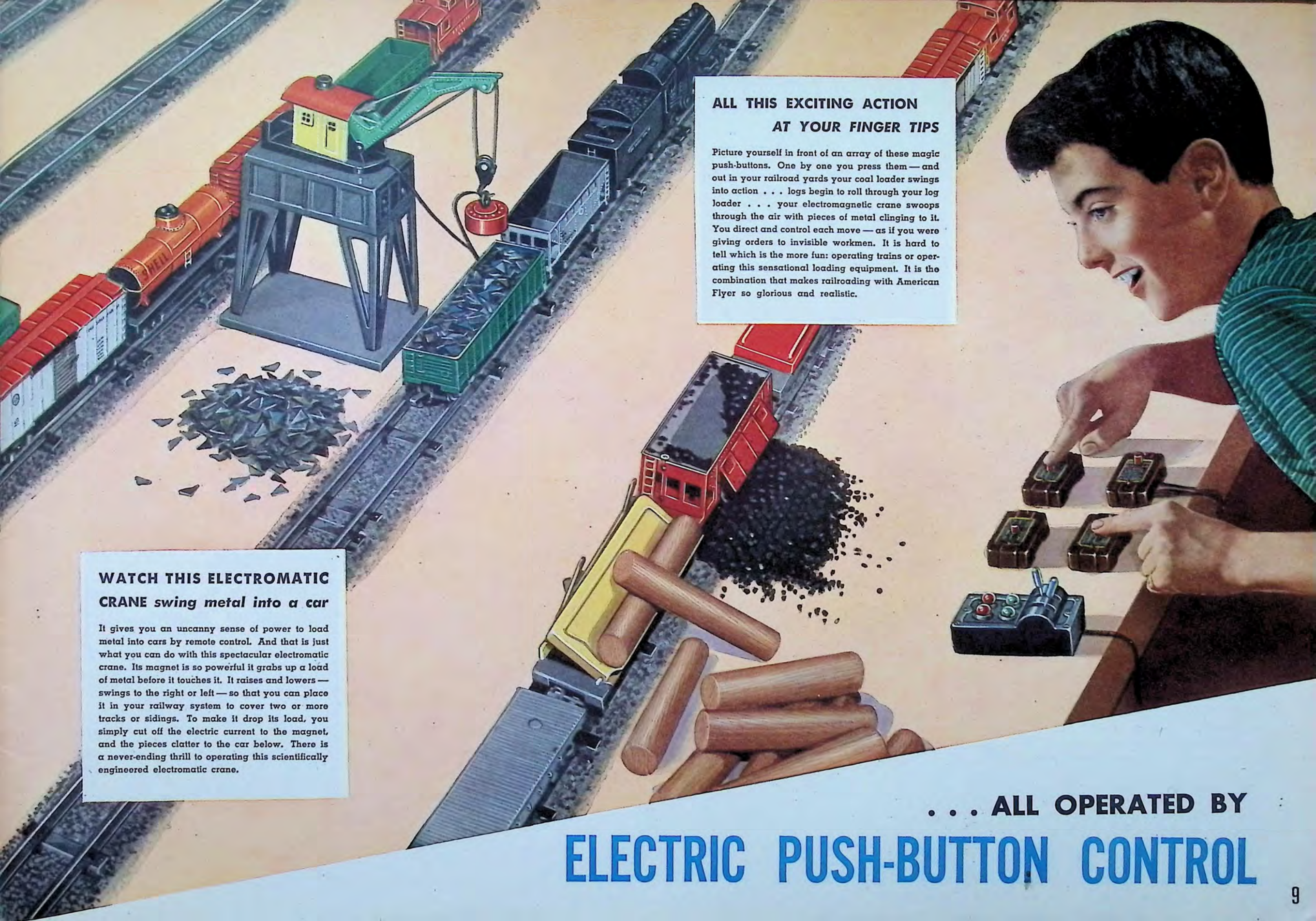


**UP GOES THE BUCKET . . .  
DOWN SLIDES THE COAL**

Notice how high this gigantic coal loader rises above the tracks. What spectacular realism it adds to your railroad system. And what fun it is to load coal cars by remote push-button control. By just a flip of your finger you drop the big bucket to the coal pile below — open its huge jaws — snap them together again — and hoist the load to the top of the tower — and a second later the coal is rattling down the chute to the waiting car. When the car reaches its destination, you press another button, and the side of the car springs open — automatically dumping the coal beside the track.

**PRESS A BUTTON . . . AND  
THE LOGS START TO ROLL**

Handling heavy timber is a fascinating part of railroading, and this automatic log loader does the job with high speed efficiency. First, you stop your train so that your automatic log car is in front of it. Next, you press a button and a hidden elevator lifts a log up to the jaws of the overhead conveyor. Press another button and the conveyor carries the log on and on until it drops with a thud into the car below. You can make other logs follow in a steady stream until your car is full. Your car is unloaded by pressing another push button.



**ALL THIS EXCITING ACTION  
AT YOUR FINGER TIPS**

Picture yourself in front of an array of these magic push-buttons. One by one you press them — and out in your railroad yards your coal loader swings into action . . . logs begin to roll through your log loader . . . your electromagnetic crane swoops through the air with pieces of metal clinging to it. You direct and control each move — as if you were giving orders to invisible workmen. It is hard to tell which is the more fun: operating trains or operating this sensational loading equipment. It is the combination that makes railroading with American Flyer so glorious and realistic.

**WATCH THIS ELECTROMATIC  
CRANE swing metal into a car**

It gives you an uncanny sense of power to load metal into cars by remote control. And that is just what you can do with this spectacular electromatic crane. Its magnet is so powerful it grabs up a load of metal before it touches it. It raises and lowers — swings to the right or left — so that you can place it in your railway system to cover two or more tracks or sidings. To make it drop its load, you simply cut off the electric current to the magnet, and the pieces clatter to the car below. There is a never-ending thrill to operating this scientifically engineered electromatic crane.

**. . . ALL OPERATED BY  
ELECTRIC PUSH-BUTTON CONTROL**

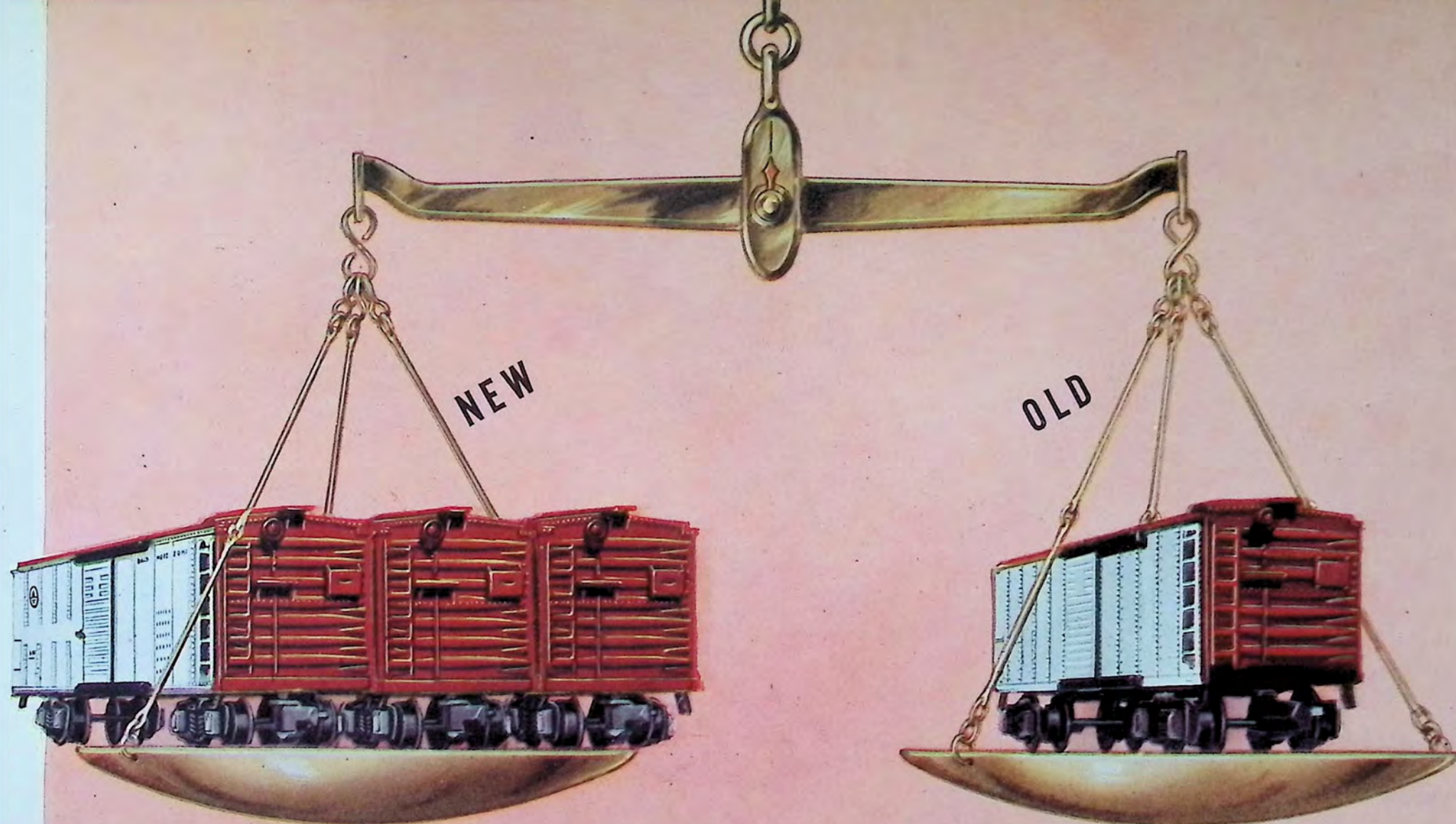
# NEW LIGHTWEIGHT PLASTIC CARS

*Less Than 1/3 The Weight  
of Old Style Cars*

Even before World War II, The A. C. Gilbert Company had done important pioneering research in plastics. During the war further spectacular progress was made in perfecting these magic new materials, and plastics replaced metals in many places where light weight was a prime requirement.

For example, the motor shells for the control valve motors used in the Grumman Hellcat and other fighting planes were made of plastic.

Today American Flyer engineers have applied their war-tested experience to developing a complete line of plastic cars — colorful — sleek — and sturdy.



If you were to place the new American Flyer plastic cars on a pair of scales and compare them with old style cars, this is what you would find. Three of these new lightweight plastic cars weigh no more than one die-cast car. Think of it. Only one-third of former weight.

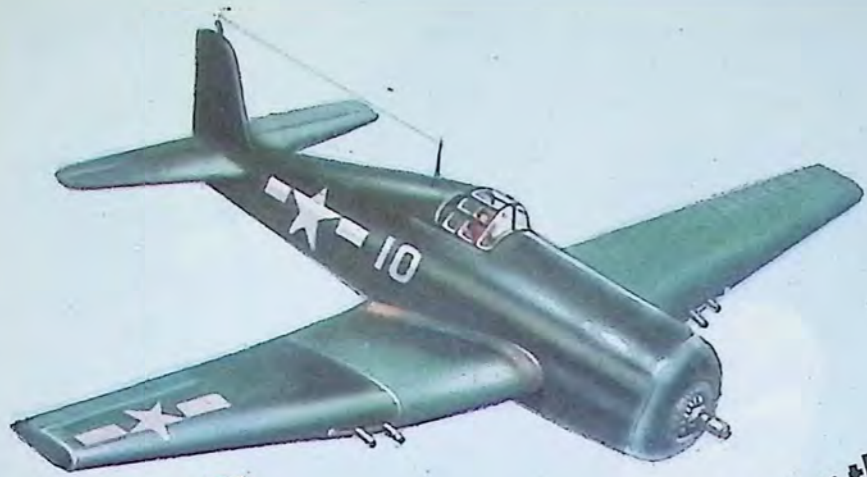
Consider how this adds to the fun and realism of operating your railroad. With old style cars you had to limit your load to seven or eight cars. But with these modern American Flyer plastic cars, you can head your engine over the iron with fifteen cars strung out behind it. What a

stirring spectacle! A train over ten feet long from front end to rear. Thus American Flyer has done with scale model cars the same thing that builders of real railroad cars are doing: reduced weight to make possible faster pick-up and give you the extra thrill of making your train hustle over the rails at breath-taking speed.

American Flyer plastic cars are amazingly strong and sturdy. All are realistic 3/16" scale models — correctly built to such fine details as ladders and bolt heads — and beautifully finished in brilliant never-fade colors.

## NOW—MAKE UP TRAINS WITH FIFTEEN CAR HAUL

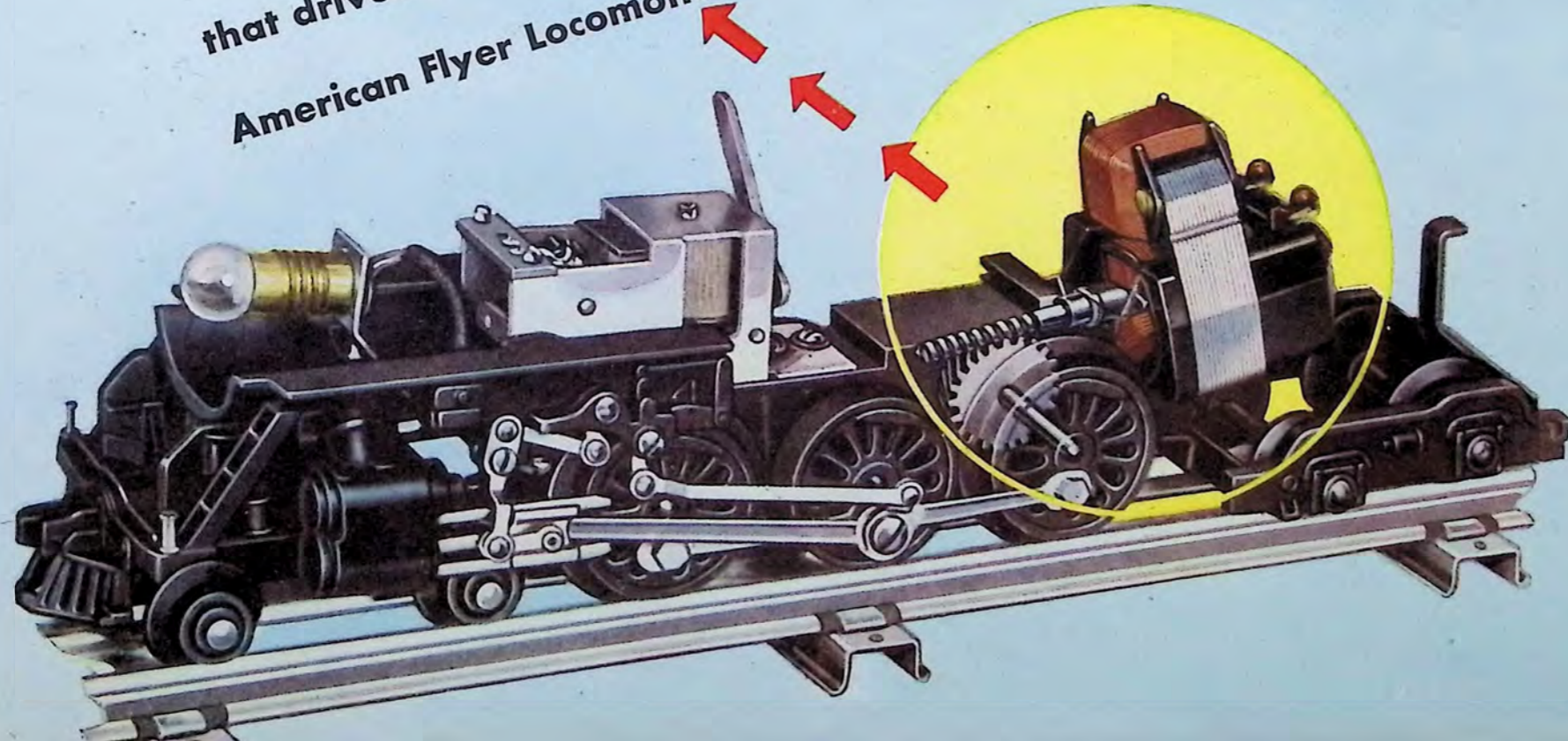




from the control valve motor that flew  
in the famous GRUMMAN HELLCAT

was developed  
THIS MIGHTY POWER PLANT

that drives every  
American Flyer Locomotive



**N**EVER before have scale model trains been powered with a motor having such an illustrious history as that used in American Flyer locomotives. It is a direct descendant of the hydraulic control valve motors selected by the Grumman Aircraft Engineering Corporation for their famous Grumman Hellcats.

Tucked away in the wings, these motors activated the hydraulic valves which forced the wing flaps down when the pilot went into a dive or prepared for landing.

Grumman Hellcats have won lasting fame for their fine engineering and tough fighting qualities. In the brilliant victories which the Hellcats scored, American Flyer motors played a valiant part. Time and again these motors gave the Navy flier a silent helping hand in winning his fight and making a safe return to his flattop.

The motor now used as standard equipment in every American Flyer locomotive carries on the great traditions earned in battle service and is built to the same rigid specifications. Certain parts, for example, are machined to an accuracy of two ten-thousandths of an inch. Here, indeed, is watch-like precision applied to scale model locomotives.

This modern, finely engineered power plant assures an abundance of smooth, surging power — long life — and realistic, precision control of your trains.



## SUPERPOWER WORM DRIVE

a Sensational American  
Flyer Development

SMOOTH PRECISION CONTROL  
AT ALL SPEEDS



Banishes Jerky "Jack-Rabbit" Pull

An important reason why American Flyer locomotives operate so realistically and quietly — without jerking or bucking—is their precision-made worm-gear drive. By giving a greater reduction in ratio (18:1), worm-gear drive increases the turning torque correspondingly, making possible slower, smoother starting and stopping. In addition, worm-gear drive enables you to maintain slow speeds without danger of stalling and gives you the steady motive power you need for high speeds. A speed of 120 scale miles per hour is easily possible with American Flyer locomotives.

Developed at the GILBERT Hall of Science

# ATLANTIC 4-4-2

Crack Highliners that Surge Over the Rails  
at Breath-Taking Speed

- ★ 3/16" Scale Model
- ★ Automatic Coupling
- ★ Superpower Worm Drive
- ★ Electric Uncoupling
- ★ Remote Control
- ★ Two-Rail Track
- ★ Lightweight Plastic Cars

## No. 4602 ATLANTIC FREIGHT TRAIN WITH "CHOO-CHOO" 21 PIECES. 40 13/16" LONG . . .

The sensational "choo-choo" built into this crack freight brings to your ears the exciting sound effects of a real train in action. Hear the slow, impatient "choo-choos" of heaving horsepower when your train is ready to go. Then, as it picks up speed, listen to those "choo-choos" come faster and faster, louder and louder, singing the magic, thrilling song of the rails with glorious realism. Watch the cars flash by on the true-to-life two-rail track that is an exciting new feature of the famous American Flyer line. Powerful die-cast locomotive has Lucite electric headlight, hauls a string of modern, lightweight plastic cars: log car with six wooden logs, box cars with sliding doors, illuminated caboose. Couple cars automatically; uncouple them by electric remote control. 14 sections of track make 140" oval. 75 or 100 Watt Transformer recommended.

Set consists of: No. 301 Locomotive and Tender with "Choo-Choo," 16" long; 628 Log Car, 8 3/4"; 633 Box Car, 7 1/2"; 630 Caboose with Light, 6". Track: 12 No. 702 curved, 1 No. 700 straight, 1 No. 705 straight with built-in uncoupling device and control box, 1 No. 690 Track Terminal.

## No. 4601 Atlantic Freight Train . . .

Same as above, but without "Choo-Choo."  
75 Watt Transformer Recommended.

## No. 4604 ATLANTIC PASSENGER TRAIN WITH "CHOO-CHOO" 21 PIECES. 50 1/2" LONG . . .

Start this sleek passenger train on its exciting run with smooth precision—just as a real engineer would. There's no jerky "jack-rabbit" jumping here—thanks to its smooth-pulling worm-gear drive. The gleaming black locomotive has four mighty drive wheels with eccentric arm double action piston rods and Lucite electric headlight. Its shining eight-wheel tender is filled with imitation coal. The sonorous rhythm of its "choo-choos" increases in intensity as the train picks up speed—just as real highliners do. The two long, handsome coaches have electric lights, and are of lightweight plastic construction that is the latest word in scale model railroading. Lightweight baggage car has sliding doors. Locomotive, all cars and two-rail track are engineered to 3/16" scale. Automatic coupling and uncoupling devices add to the fun of operating. Track makes 140" oval. 75 or 100 Watt Transformer recommended.

Set consists of: 1 No. 301 Locomotive and Tender with "Choo-Choo," 16" long; 651-G Baggage Car, 10 3/4"; 2 650-G Coaches, 10 3/4". Track: 12 No. 702 curved, 1 No. 700 straight, 1 No. 705 straight with built-in uncoupling device and control box, 1 No. 690 Track Terminal.

## No. 4603 Atlantic Passenger Train . . .

Same as above, but without "Choo-Choo."  
75 Watt Transformer Recommended.



Developed at the GILBERT Hall of Science

# PENNSYLVANIA 4-6-2

As these Famous Limiteds Pound Down the Main — Their "Choo-Choos" Change Tone with Every Change in Speed

- ★ Real Smoke
- ★ "Choo-Choo"
- ★ 3/16" Scale Model
- ★ Superpower Worm Drive
- ★ Remote Control
- ★ Automatic Coupling
- ★ Electric Uncoupling
- ★ Two-Rail Track
- ★ Lightweight Plastic Cars

## No. 4607 PENNSYLVANIA FREIGHT TRAIN WITH "CHOO-CHOO" AND SMOKE FEATURE . . . 14 PIECES. 40 1/4" LONG

Highball this fast freight, and a throbbing chorus of "choo-choos" greets your ears. Bring it to a stop and the "choo-choos" become the panting growls of a mechanical monster eager to be on its way. Die-cast locomotive is finished in locomotive black with jeweled markers, is equipped with the sensational new American Flyer smoke feature. It actually trails clouds of smoke as it pounds down the main iron! Oil car has brake wheel. Caboose has authentic cupola. Hopper car with manual control lever for dumping is extra fun feature. Uncouple cars by remote control while train is moving; couple them anywhere. Run at night, with house lights off, the electric headlight and illuminated caboose cast an awesome glare over the realistic two-rail track. Smoke and "choo-choos" add further realism to the scene. Track makes 140" oval. 100 or 150 Watt Transformer recommended.

Set consists of No. 312 Locomotive and Tender with "Choo-Choo" and smoke, 17 3/4" long; 632 Hopper Car, 6 3/4"; 625 Tank Car, 7 3/4"; 630 Caboose, 6". Track: 12 No. 702 curved, 1 No. 700 straight, 1 No. 705 straight with built-in uncoupling device and control box, 1 No. 690 Track Terminal.

## No. 4606 Pennsylvania Freight Train with "Choo-Choo" . . . Same as above, but without smoke feature.

No. 4605 Pennsylvania Freight Train . . .  
Same as above, but without "Choo-Choo" and smoke feature.  
75 or 100 Watt Transformer recommended.

## No. 4609 PENNSYLVANIA PASSENGER TRAIN WITH "CHOO-CHOO" AND SMOKE FEATURE . . . 21 PIECES. 50 1/2" LONG

Watch the glorious plumes of smoke as this hotshot roars over the rails, wheeling its sleek, modern string of varnish behind it. Listen to the "choo-choos" increase in volume and power as the pistons flash faster and faster. You'll understand why this 3/16" scale model—with two-rail track—delights veteran yardmasters with its sheer realism. Its engine has the modern, precision-made worm drive that enables you to maintain a speed as low as 1 scale m.p.m. without danger of stalling! It also gives you the steady surge of power you need for high speeds — up to 120 scale m.p.h.! Amazingly quiet, too. Two de luxe coaches glitter with lights. They are made of modern plastic — light in weight — beautiful, never-fade colors. Baggage car measures 10 3/4" long. Track makes 140" oval. 100 or 150 Watt Transformer recommended.

Set consists of: No. 312 Locomotive and Tender with "Choo-Choo" and smoke, 17 3/4" long; 651-R Baggage Car, 10 3/4"; 2 650-R Coaches, 10 3/4". Track: 12 No. 702 curved, 1 No. 700 straight, 1 No. 705 straight with built-in uncoupling device and control box, 1 No. 690 Track Terminal.

## No. 4608 Pennsylvania Passenger Train with "Choo-Choo" . . . Same as above, but without smoke feature.



Developed at the GILBERT Hall of Science

# HUDSON 4-6-4

These Majestic New York Central Scale Models Fill the Air with their Realistic Sounding "Choo-Choos"

- ★ Real Smoke
- ★ "Choo-Choo"
- ★ 3/16" Scale Model
- ★ Superpower Worm Drive
- ★ Remote Control
- ★ Automatic Coupling
- ★ Electric Uncoupling
- ★ Two-Rail Track
- ★ Lightweight Plastic Cars

No. 4611 NEW YORK CENTRAL FREIGHT TRAIN WITH "CHOO-CHOO" AND SMOKE FEATURE . . .  
23 PIECES. 52 3/16" LONG

Powered by a husky New York Central J-3a, this mighty freight — with four lightweight plastic cars — is crammed with stirring fun. The majestic locomotive has six big drive wheels, four-wheel pony and booster trucks, and a 12-wheel tender that provides tremendous tractive force for high-speed operation. The built-in "choo-choos" are synchronized to vary in intensity with changes in train speed. They are so distinct you can hear them 100 feet away! Great clouds of smoke erupt from the locomotive as it thunders over its authentic two-rail track. And that's not all! You can turn the electric Army searchlight on the floodlight car at any angle. You can press the remote control button of the coal dump car, make it swing open to let realistic coal pour into an unloading bin. Cattle car has sliding door. Caboose is illuminated. Track makes 140" oval. 100 or 150 Watt Transformer recommended.

Set consists of: No. 322 Locomotive and Tender with "Choo-Choo" and smoke, 19" long; 716 Automatic Coal Dump Car with Control Box, 7 3/8"; 634 Floodlight Car, 8 3/4"; 629 Cattle Car 7 1/8"; 630 Caboose with Light, 6". Track: 12 No. 702 curved, 1 No. 705 straight with built-in uncoupling device and control box, 1 No. 710 Automatic Track Section, 1 No. 690 Track Terminal.

No. 4610 New York Central Freight Train with "Choo-Choo" . . .

Same as above, but without smoke feature.

No. 4613 NEW YORK CENTRAL PASSENGER TRAIN WITH "CHOO-CHOO" AND SMOKE FEATURE . . .  
24 PIECES. 69 15/16" LONG

It smokes like a Mainliner. It "choo-choos" like a Mainliner. It is a Mainliner . . . in every detail an authentic replica of the gigantic Hudsons that roar their way through the Empire State! Wheeled by the same type engine that operated the control valves in the famous Grumman Hellcat, it is truly a glorious sight. But it's even more exciting at night as it steps bravely through a darkened room, its Lucite electric head lamp throwing a long white beam down its realistic two-rail track, lights sparkling under the imitation shades of the modern lightweight plastic Pullmans and observation car. Quiet, even-pulling worm drive gives you the special thrill of having instantaneous, super-smooth control over this husky locomotive at all speeds from a slow crawl to a full "highball." Track makes 160" oval. 100 or 150 Watt Transformer recommended.

Set consists of: No. 322 Locomotive and Tender with "Choo-Choo" and smoke, 19" long; 653-R Baggage and Club Car, 12"; 2 652-R Pullmans, 12"; 654-R Observation, 11 1/8". Track: 12 No. 702 curved, 3 No. 700 straight, 1 No. 705 straight with built-in uncoupling device and control box, 1 No. 690 Track Terminal.

No. 4612 New York Central Passenger Train with "Choo-Choo" . . .

Same as above, but without smoke feature.



Developed at the GILBERT Hall of Science

# UNION PACIFIC 4-8-4

Their Eight Huge Drive Wheels and Deep-Throated "Choo-choos" Symbolize Mighty Power Through the Rockies

- ★ Real Smoke
- ★ "Choo-Choo"
- ★ 3/16" Scale Model
- ★ Superpower Worm Drive
- ★ Remote Control
- ★ Automatic Coupling
- ★ Electric Uncoupling
- ★ Two-Rail Track
- ★ Lightweight Plastic Cars

## No. 4615 UNION PACIFIC FREIGHT TRAIN WITH "CHOO-CHOO" AND SMOKE FEATURE . . . 24 PIECES. 63" LONG

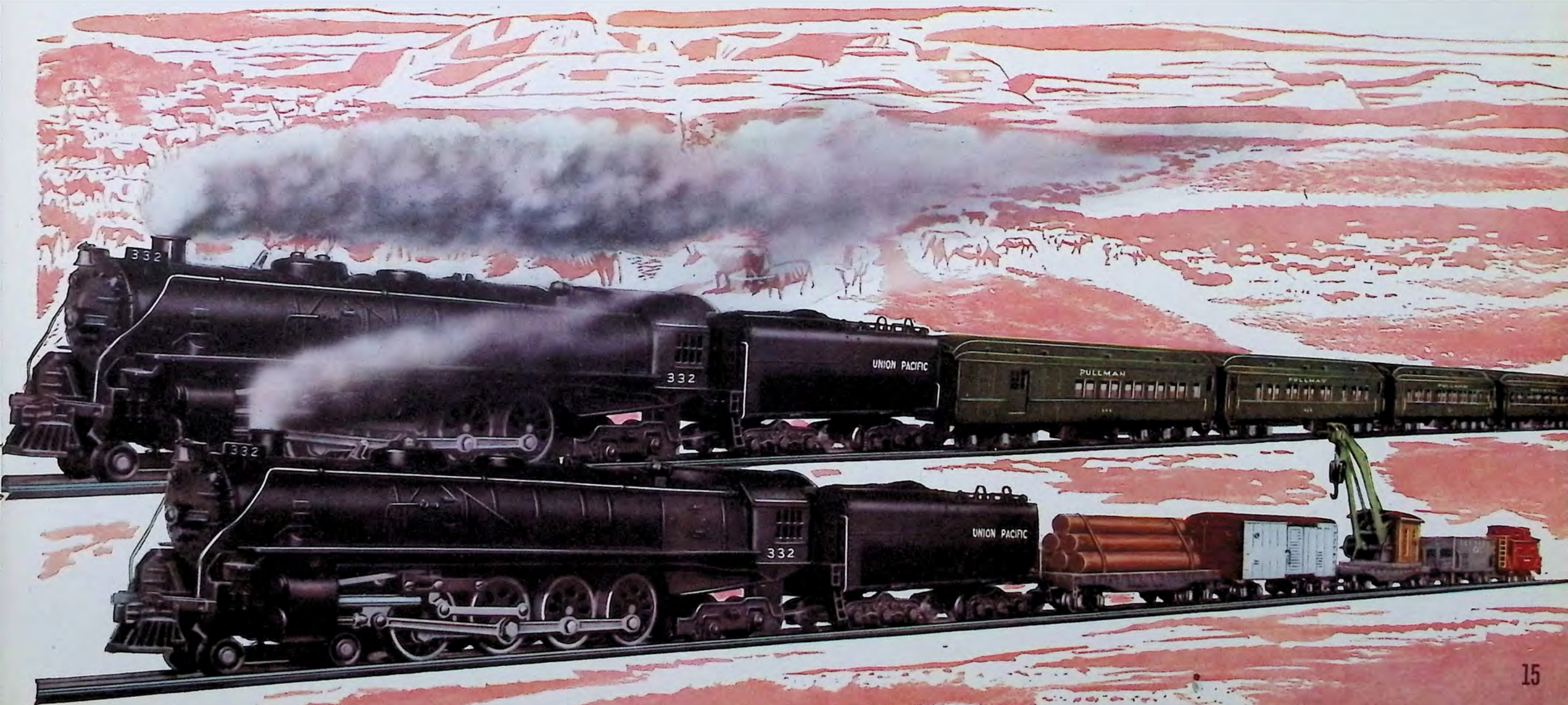
You will make your friends gasp with wonder as you start this train by remote control . . . hear its "choo-choos" change tone and tempo with every change of speed . . . and see great gusts of smoke fill the air. It's an exact replica of trains that thunder through the Rocky Mountains. As the eight great drive wheels pound over the rails, the eccentric arm triple-action piston rods, side rods and connecting rods dizzily flash back and forth! A special feature of this scale-model wonder is the wrecker car with the revolving cab and boom with hook that raises and lowers! Its hopper car is complete with brake wheel and manual control lever. The log car has six realistic logs. The caboose is illuminated. All cars are modern, lightweight plastic. Two-rail track is built to same scale as train. Track makes 160" oval. 150 or 250 Watt Transformer recommended.

Set consists of: No. 332 Locomotive and Tender with "Choo-Choo" and smoke, 21½" long; 628 Log Car, 8¾"; 633 Box Car, 7½"; 635 Wrecker, 8¾"; 632 Hopper, 6¾"; 630 Caboose, 6". Track: 12 No. 702 curved, 3 No. 700 straight, 1 No. 705 straight with built-in uncoupling device and control box, 1 No. 690 Track Terminal.

## No. 4617 UNION PACIFIC PASSENGER TRAIN WITH "CHOO-CHOO" AND SMOKE FEATURE . . . 25 PIECES. 72 7/16" LONG

A gleaming miracle of die-cast metal, this huge, handsomely groomed Union Pacific scale model locomotive rolls impressively along. Smoke whipping in great clouds from its stack . . . thundering "choo-choos" echoing and re-echoing over the pounding of its wheels. Hustling behind its long tender is a full leash of colorful, lightweight plastic cars that are the latest word in scale model perfection. The brilliantly engineered coach, Pullman and observation car have genuine electric lights. All cars have nickel journal boxes. Every car has automatic couplers, so that you can couple them anywhere — uncouple them in a flash. The track is realistic two-rail type — authentic T-rail design. Locomotive has Lucite electric head light placed in removable boiler front. 16 sections of track make 160" oval. 100 or 150 Watt Transformer recommended.

Set consists of: No. 332 Locomotive and Tender with "Choo-Choo" and smoke, 21½" long; 653-G Baggage and Club Car, 12"; 2 652-G Pullmans, 12"; 654-G Observation, 11½". Track: 12 No. 702 curved, 3 No. 700 straight, 1 No. 705 straight with built-in uncoupling device and control box, 1 No. 690 Track Terminal.



Developed at the GILBERT Hall of Science

# NICKEL PLATE 0-8-0

"Shuffle the Deck" (switch cars around) just as they do in real railroad classification yards

- ★ Real Smoke
- ★ "Choo-Choo"
- ★ 3/16" Scale Model
- ★ Superpower Worm Drive
- ★ Remote Control
- ★ Automatic Coupling
- ★ Electric Uncoupling
- ★ Two-Rail Track
- ★ Lightweight Plastic Cars

## This authentic SWITCHER

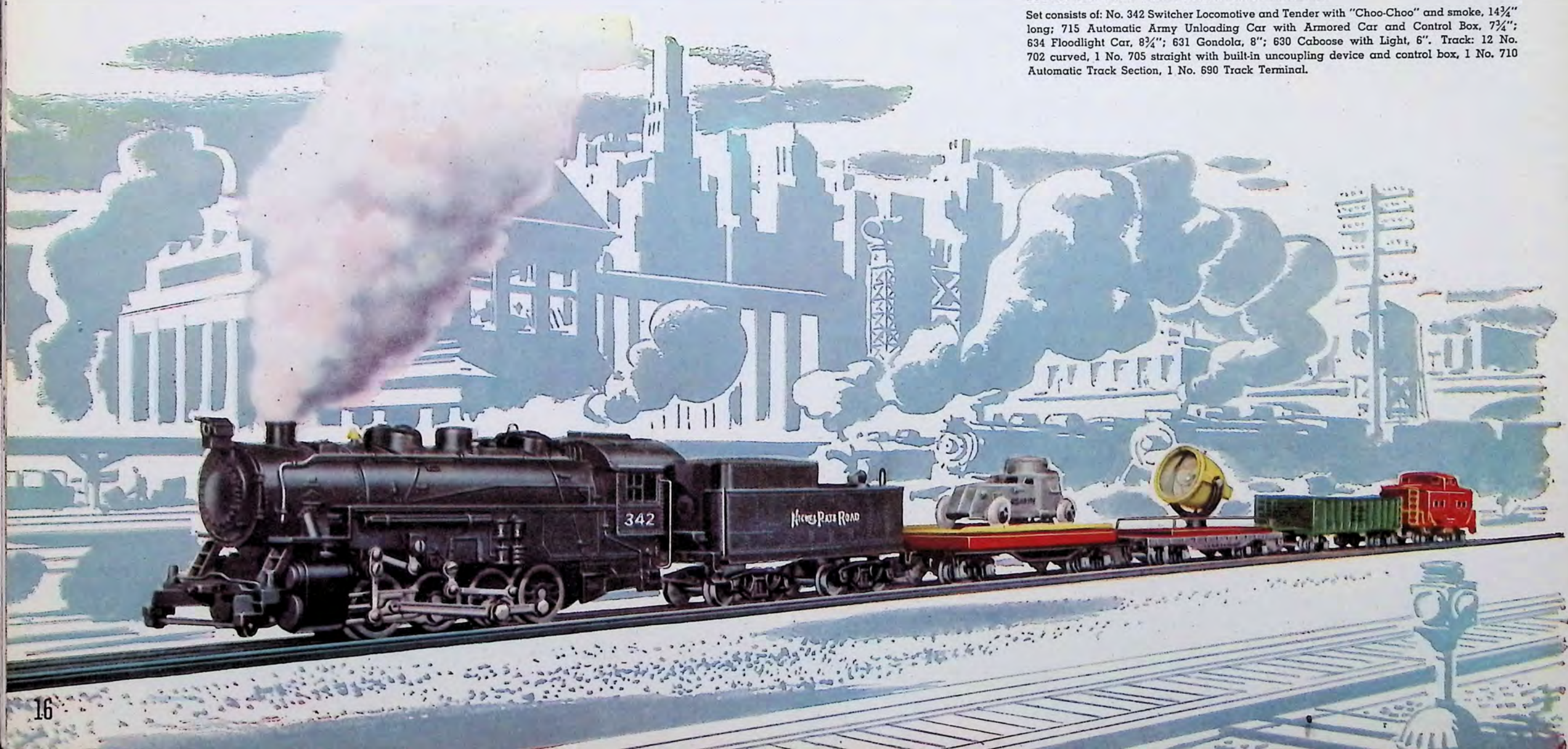
... with smoke streaming from its  
stack, and its "Choo-Choos"  
piercing the air ...  
is the aristocrat of "yard goats"

No. 4618 NICKEL PLATE SWITCHER WITH  
"CHOO-CHOO" AND SMOKE FEATURE . . .

24 PIECES. 48 1/4" LONG

Real railroading excitement takes place in the busy classification yards where cars are switched from track to track to make up trains. That's why this powerful eight drive wheel die-cast "yard goat" sets a new high for thrilling fun. Its realistic-sounding "choo-choos" and realistic-looking smoke are fully synchronized to the speed of the locomotive. Four fascinating cars: Army automatic unloading car with armored car that rushes off the swiveling, tilting platform by remote control; Army searchlight car with floodlight that turns and twists at any angle, throws long, brilliant beam of light; sturdy gondola; illuminated caboose. All in vivid colors. Locomotive has smooth-pulling worm drive, Lucite electric head light in removable boiler front, eccentric arm triple action piston rods, side rods and connecting rods. Tender is die-cast, coal type, has rear Lucite light — just like a real "yard goat." Automatic coupling on front of locomotive, tender and all cars. Electric uncoupling device built in section of track, remote push button control. Track makes 140" oval. 100 or 150 Watt Transformer recommended.

Set consists of: No. 342 Switcher Locomotive and Tender with "Choo-Choo" and smoke, 14 3/4" long; 715 Automatic Army Unloading Car with Armored Car and Control Box, 7 3/4"; 634 Floodlight Car, 8 3/4"; 631 Gondola, 8"; 630 Caboose with Light, 6". Track: 12 No. 702 curved, 1 No. 705 straight with built-in uncoupling device and control box, 1 No. 710 Automatic Track Section, 1 No. 690 Track Terminal.



Developed at the GILBERT Hall of Science

# PENNSYLVANIA K-5

- ★ Real Smoke
- ★ "Choo-Choo"
- ★ Automatic Log Loader
- ★ 3/16" Scale Model
- ★ Remote Control
- ★ Superpower Worm Drive
- ★ Automatic Coupling
- ★ Electric Uncoupling
- ★ Two-Rail Track
- ★ Lightweight Plastic Cars

Rolling impressively under billowing clouds of smoke and defiantly snorting its "Choo-Choos," this Red Ball Freight brings you all the glory of railroading.

No. 4619 PENNSYLVANIA FREIGHT TRAIN WITH "CHOO-CHOO" AND SMOKE FEATURE . . .

25 PIECES. 49 1/2" LONG

With the stirring noise of its "choo-choos" in your ears . . . with real smoke floating back over the cars, you will feel you are in the lumber country when you bring this four-car freight to a stop in front of that gigantic log loader. Press a remote control button and a log almost shoots up to the overhead conveyor. Press another button and the log is carried on and on until it hangs over the log car—then drops with a thud. One log quickly follows another until your car is full. You start your train again . . . "choo-choos" and smoke mount in volume as your train gains speed. Arrived at your destination, you press another button and the logs come tumbling to the ground. Locomotive is authentic replica of famous Pennsylvania K-5 and has Lucite head light. Caboose is illuminated. Other fascinating cars are hopper car, and girder car, fully loaded with a bridge girder. All cars of colorful lightweight plastic. 14 sections of realistic two-rail track make oval of 140 inches. 100 or 150 Watt Transformer recommended.

Set consists of: No. 312 Locomotive and Tender with "Choo-Choo" and smoke, 17 3/4" long; 717 Automatic Log Car with Control Box, 7 1/16"; 627 Girder Car, 8 3/4"; 632 Hopper, 6 3/8"; 630 Caboose with Light, 6"; 751 Log Loader with Control Box, 8 7/8" wide x 11 1/2" long x 11" high. Track: 12 No. 702 curved, 1 No. 705 straight with built-in uncoupling device and control box, 1 No. 710 Automatic Track Section, 1 No. 690 Track Terminal.



Developed at the GILBERT Hall of Science

# NEW YORK CENTRAL J-3A

- ★ Real Smoke
- ★ "Choo-Choo"
- ★ Coal Loader
- ★ 3/16" Scale Model
- ★ Superpower Worm Drive
- ★ Remote Control
- ★ Automatic Coupling
- ★ Electric Uncoupling
- ★ Two-Rail Track
- ★ Lightweight Plastic Cars

*Sleek and gleaming, this mighty battleship highballs its long leash of freight cars under leaping streamers of smoke and to a chorus of "Choo-Choos"*

No. 4620 NEW YORK CENTRAL FREIGHT TRAIN WITH "CHOO-CHOO" AND SMOKE FEATURE . . .

27 PIECES. 52 1/4" LONG

Night and day, powerful trains such as this thunder from the coal mines to city coal yards. And with this magnificent set you can reproduce the exciting action of loading — transporting — and unloading coal. There stands your train, ready to be loaded . . . slow, growling "choo-choos" and lazy wisps of smoke rising from the locomotive. By flipping a remote control button, you make the big bucket drop to the coal pile and pick up a big mouthful. Up to the top of the tower goes the loaded bucket, dumping the coal into the chute that carries it to the car below. Now you hustle your train on its way to a crescendo of "choo-choos" and gusts of smoke . . . bring it to a stop . . . and dump your loaded coal car by remote control. Set includes wrecker car with boom and hook on a swivel base, box car and illuminated caboose. Locomotive is 3/16" scale replica of the mighty monsters that speed along the Hudson River, and has Lucite head light. Authentic two-rail track makes 160" oval. 100 or 150 Watt Transformer recommended.

Set consists of: No. 322 Locomotive and Tender with "Choo-Choo" and smoke, 19" long; 716 Automatic Coal Car with Control Box, 7 5/8"; 633 Box Car, 7 1/8"; 635 Wrecker, 8 3/4"; 630 Caboose with Light, 6"; 752 Seaboard Coaler with Control Box, 8 3/4" wide x 10 1/8" long x 16 1/2" high. Track: 12 No. 702 curved, 2 No. 700 straight, 1 No. 705 straight with built-in uncoupling device and control box, 1 No. 710 Automatic Track Section, 1 No. 690 Track Terminal.



Developed at the GILBERT Hall of Science

## UNION PACIFIC - 8 DRIVE WHEEL

- ★ Real Smoke
- ★ "Choo-Choo"
- ★ Automatic Mail Car
- ★ 3/16" Scale Model
- ★ Superpower Worm Drive
- ★ Remote Control
- ★ Automatic Coupling
- ★ Electric Uncoupling
- ★ Two-Rail Track
- ★ Lightweight Plastic Cars

Wonder of the West!  
Watch this mammoth Union  
Pacific Hotshot hustle its  
varnish over the rails as smoke  
pours from its stack and its  
"Choo-Choos" echo  
and re-echo

No. 4621 UNION PACIFIC PASSENGER TRAIN WITH  
"CHOO-CHOO" AND SMOKE FEATURE . . .

28 PIECES. 81 7/16" LONG

Picture yourself wheeling this superpower battleship with its string of five brilliantly colored plastic cars. How those eight huge drive-wheels hug the rails. How smoothly the power flows from the mighty electric engine through the precision-built worm drive. How realistically the "choo-choos" rumble and snort — rising and descending in tone as you change train speed. How thrilling to see real smoke pouring out and floating like a long plume over the landscape. And what vivid, spectacular action you get when that mail car flashes by. Automatically a metal arm reaches out and grabs up a sack of mail — while another sack comes tumbling to the ground. From its long-beam Lucite head light to the gleaming guard rail on the observation car, it's every inch a de luxe limited . . . so perfectly built and beautifully finished that it will delight the most critical scale model railroader. The two magnificent coaches, Pullman and observation car are all illuminated. Two-rail track makes 180" oval. 150 or 250 Watt Transformer recommended.

Set consists of: No. 322 Locomotive and Tender with "Choo-Choo" and smoke, 21½" long; 718-R Automatic Mail Pick-Up Car with Control Box, 10¼"; 2 650-R Coaches, 10¼"; 652-R Pullman, 12"; 654-R Observation Car, 11½". Track: 12 No. 702 curved, 4 No. 700 straight, 1 No. 705 straight with built-in uncoupling device and control box, 1 No. 711 Mail Pick-Up Track Section, 1 No. 690 Track Terminal.



### FAST MAIL DELIVERY

Your moving train  
grabs one  
mail sack —  
throws out another.  
You direct  
both actions  
by remote control

Developed at the GILBERT Hall of Science

# AMERICAN FLYER COMPLETE RAILROAD SYSTEM

*Two handsomely groomed trains that fill the air with realistic smoke and "Choo-Choos" as they thunder past stations and over bridges — Electromatic crane and other fascinating scale model equipment — Locomotives, cars and track authentically engineered to 3/16" scale.*

Think of the thrill of being at the remote controls and making these marvelous trains and equipment throb with action.

LISTEN to those "choo-choos" as your locomotives stand ready to race over the rails.

LOOK at the smoke that comes billowing up from their smoke stacks.

HEAR the "whoo-whoo" of the whistle when your train passes over the automatic trip. Notice how the "choo-choos" and smoke increase in volume and intensity as your trains gather speed . . . just like real mainliners.

One thrill follows another more rapidly than at a three-ring circus. See that crossing gate lower when a train approaches — raise when it has passed. Watch that mail car automatically toss out one sack of mail and pick up another while the train is in motion. Make your electromatic crane pick up a load of metal—hoist it high in the air—swivel around — and drop the clattering pieces in the car below.

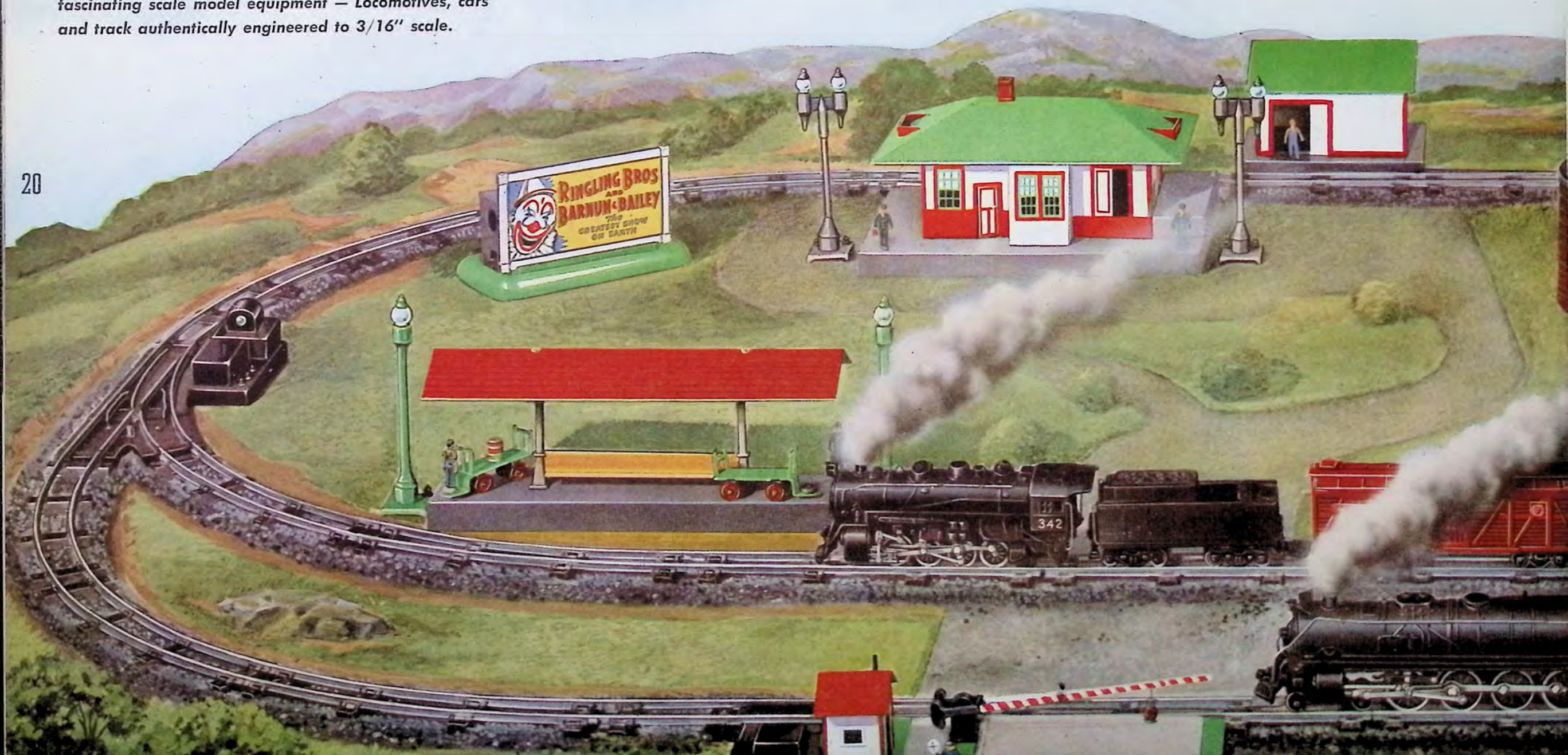
At night the long-beam Lucite head lights of your locomotives cast a lurid glare over the realistic two-rail track — and twinkling lights from passing car windows, passenger station,

lamp posts, crossing gate, water tower and trestle bridge add brilliant splendor to the scene.

With two locomotives and a wide variety of both passenger and freight cars, you can make up trains in countless different ways. Two passenger trains or two freight trains. You can uncouple a string of cars in a split second. Couple them anywhere.

No. 4622 American Flyer Complete Railroad System comprises 91 pieces. Its 33 sections of track make a 350" layout. 250 Watt Transformer recommended.

20



**THIS COMPLETE SYSTEM, laid out as illustrated, occupies a space 50 x 90 inches.**

Set consists of: No. 332 Locomotive and Tender with "Choo-Choo" and smoke, 21½" long; 718-R Automatic Mail Pick-up Car with Control Box, 10¼"; 650-R Coach, 10¼"; 652-R Pullman, 12"; 654-R Observation, 11½"; 342 Switcher Locomotive and Tender with "Choo-Choo" and X, 14¼"; 629 Cattle Car, 7¾"; 633 Box Car, 7¾"; 715 Army Unloading Car with Armored Car and Control Box, 7¾"; 634 Floodlight Car, 8¾"; Gondola, 8"; 630 Caboose with Light, 6". Track: 16 No. 702 curved, 11 No. 700 straight, 2 No. 705 straight with built-in uncoupling device and control box, 1 No. 711 Automatic Mail Pick-up Track Section, 1 No. 710 Automatic Track Section for Army Unloading Car, 1 pair No. 720 track switches with control box, 1 No. 690 Track Terminal. Other equipment: No. 577 Whistling Billboard with Control Box and Track Trip, 2 579 Single Street Lights with Track Terminals, 2 580 Double Arc Lights with Track Terminals, 589 Passenger and Freight Station with Track Terminal, 585 Tool Shed, 750 Trestle Bridge with Track Terminal, 583 Electromatic Crane with Control Box, 581 Girder Bridge, 596 Water Tank with Control Box and Track Terminal, 586-F Wayside Station with Two Figures and Track Terminal, 578 Station Figure Set (9 figures), 591 Crossing Gate Set with Track Trip.

## ALL CONTROLS AT YOUR FINGER TIPS

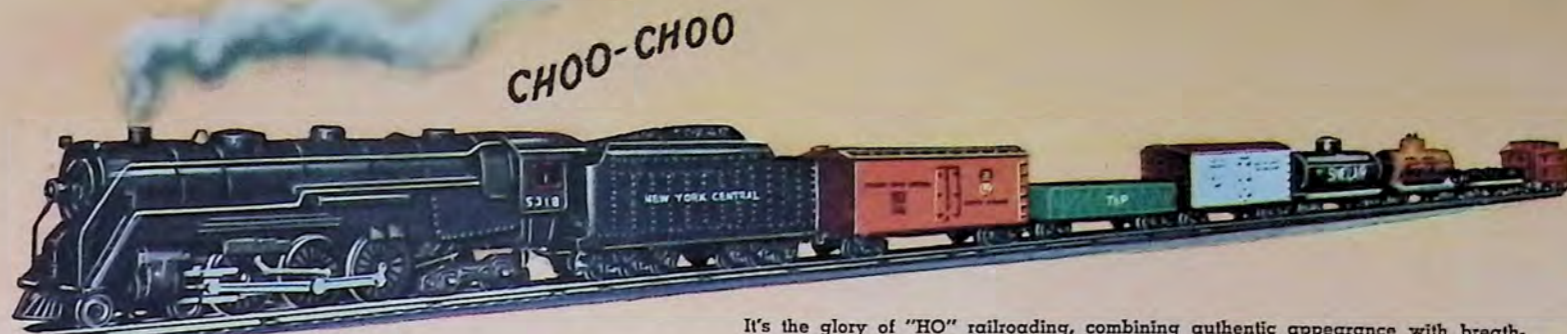
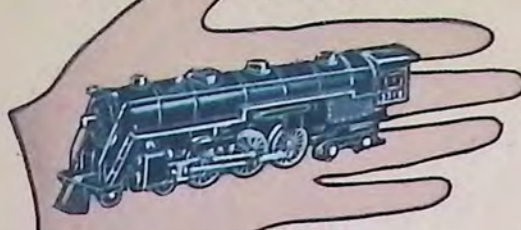
By just turning a lever or pushing a button you can operate both trains at speeds up to 120 scale miles per hour — blow the whistle — couple and uncouple cars — raise and lower station gate — load and unload freight cars with metal — and reproduce the glorious drama of running a real railroad. The fun of owning this complete two train railroad system starts the moment you begin to lay the track . . . and it never ends. The photograph below shows what a realistic effect you can create.



## AMERICAN FLYER

# "HO" TRU-MODEL TRAINS AND EQUIPMENT

"HO" GAUGE  
THE HOBBYISTS' LINE



CHOO-CHOO

- ★ Built to Scale from Railroad Blueprints
- ★ "Choo-Choo"      ★ Real Smoke
- ★ Worm Drive Locomotive
- ★ Permanent Magnet Motor
- ★ New Positive Control D.C. Power Source
- ★ Two-Rail Track on Realistic Bakelite Roadbed

## HO-142 7-CAR TRANSCONTINENTAL RED BALL--56 1/2" LONG . . . . .

with "Choo-Choo," Real Smoke

It's the glory of "HO" railroading, combining authentic appearance with breath-taking performance. This smoking, "choo-chooing" Red Ball with Permanent Magnet motor deserves its reputation as the finest value miniature train ever offered.

Set consists of: 1 HO-151 N.Y.C. Hudson type (4-6-4) Locomotive and Tender, 14" long; 1 HO-123 "Pacific Fruit Express" Ref. Car, Tuscan red with orange sides, ladder and catwalk; 1 HO-127 "T.&P." Gondola, Green with white lettering; 1 HO-124 "Merchants Despatch" Ref. Car, Tuscan red, white sides, ladder and catwalk; 1 HO-126 "Sinclair" Tank Car, Black tank, white lettering; 1 HO-125 "Shell" Tank Car, Orange colored tank, black lettering; 1 HO-129 "N.H." Drop-center Flat Car, loaded with giant transformer; 1 HO-131 illuminated Caboose with cupola, brass end rails and ladders; 12 8 3/8" sections HO-260 curve; 2 8" sections HO-261 straight (makes 116" oval); Track Terminal.

HO-145 — same as above, but without "Choo-Choo" and smoke.

NOT only do these "HO" trains make possible elaborate and exciting track layouts in extremely small space, but they also represent the utmost in realism. They are the first and only "HO" trains that reproduce the throbbing "choo-choo" sound effects of a real locomotive . . . that give off great billowing clouds of smoke. And both of these thrilling features are automatically synchronized to the speed of the train. Locomotives and cars are built to high precision standards and are correct in every detail.

An important innovation is the direct current power source that gives easier and more positive control over starting, stopping and reversing your train. You reverse your train entirely electrically — by changing the polarity of current on the track. This new D.C. power source banishes backing up after each stop. For example, as you stop and start your train, it instantly resumes its run in the same direction in which it was last traveling — unless you intentionally change its direction by pushing control lever. In addition this modern D.C. power source assures easier starting, smoother pull and more power. You can make your train crawl along or hit over 120 scale miles per hour — changing from

one speed to another in a flash. It is important to note that this new power source operates on the regular A.C. house current only.

Completing the spectacular realism of these superb "HO" train sets is the two-rail track mounted on Bakelite roadbed and with ties spaced to "HO" scale.

### BUILD 'EM YOURSELF — IF YOU LIKE

Miniature Tru-Model  
Locomotives and Rolling Stock  
in Ready-to-Assemble Kits

★ Building these realistic locomotives, tenders and cars is nearly as much fun as running them afterwards. Kits are complete with molded parts, automatic couplers, decalcomanias, easy instructions. Every piece is flawlessly made. No filing or scraping is necessary. Get yourself an "extra bonus" in enjoyment by making your own "HO" train. Decide now which of these splendid kits you want first.



HO-254 GIRDER BRIDGE . . .

Modern plate girder type bridge authentically designed and built to correct scale dimensions. Finished in black. Perfect in detail.



HO-258 PASSENGER AND  
FREIGHT STATION . . .

Tru-Model illuminated station on raised platform with regulation bay window ticket office. Freight section has loading platform with sliding door.



HO-252 BLOCK  
SIGNAL . . .

Exactly scaled to the fine HO trains it controls, this ladder equipped signal is mounted on a rugged base. Electrically operated shutter turns light red or green.

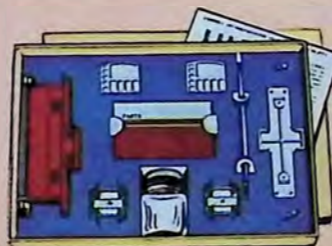
HO-12  
TUNNEL . . .

Realistically colored and solidly constructed, this mountain style 8" tunnel is a picturesque addition to your line. Correctly scaled.



HO-256 SIGNAL TOWER . . .

Your HO roadway will have a new touch of realism when you add this brilliantly colored die-cast signal tower. Stairs lead up to lighted top floor.



HO-131K CABOOSE KIT . . .

This fascinating kit builds an authentic, perfectly scaled caboose. Everything you need from start to finish is included along with easy-to-follow instructions. Illuminated.

HO-131 CABOOSE 4 1/2" long . . .

Perfectly scaled. Cupola, end rails and ladders. Illuminated.



HO-128K "L.N.E." GONDOLA KIT  
and HO-127K "T.&P." GONDOLA  
KIT . . .

You'll want to build both these gondola cars. Each kit contains automatic couplers, decalcomanias, instructions.

HO-128 GONDOLA CAR . . .

"Lehigh New England," gray, 6".

HO-127 GONDOLA CAR . . .

"T.&P.," green, 6".



HO-123K "PAC. FRUIT EXP.,"  
HO-124K "MERCHANTS DES."  
REFRIGERATOR CAR KITS . . .

Sections of lightweight plastic, trucks, wheels, automatic couplers. Everything for a fine refrigerator car.

HO-123 "PACIFIC FRUIT  
EXP." . . .

Tuscan Red, orange sides, 5 1/16".

HO-124 "M.D." REF. CAR . . .

Ladders, catwalk, white sides, 5 1/16".



HO-125K "SHELL" TANK CAR  
KIT, HO-126K "SINCLAIR" CAR  
KIT . . .

Kits make Tank Cars which are exact replicas of those used by two of this country's major oil companies.

HO-125 "SHELL" TANK CAR . . .

Orange with black letters, 5 1/16".

HO-126 "SINCLAIR" TANK CAR . . .

Black, white letters, 5 1/16".



TWO-RAIL TRACK 32" DIAMETER — (No Center Rail) . . .

Mounted on realistic Bakelite Roadbed. The tracks are perfect replicas of the real thing . . . there is no center rail. This is made possible by a special type of power contact through opposite brass wheels on the tender trucks.



**HO-141 3-CAR "HOTSHOT" PASSENGER TRAIN--42" LONG**  
with "Choo-Choo," Real Smoke

A marvel of tru-model design and precision construction, the 14" die-cast N.Y.C. Hudson type locomotive surges over the iron, pouring out clouds of smoke, and roaring its "choo-choos." Eccentric arms, valve levers and piston rods that shuttle back and forth with gleaming realism. Beaming Lucite headlight. 9" cars are molded, green, have automatic couplers.

Set consists of: 1 HO-151 N.Y.C. Hudson type (4-6-4) Locomotive and Tender, 14" long; 1 HO-133 illuminated Baggage and Mail Car; 2 HO-135 Passenger coaches; 12-8 3/8" sections HO-260 curve track. Realistic Bakelite Roadbed (makes 100" circle - 32" diameter); Track Terminal.

HO-144 - same as above, but without "Choo-Choo" and smoke.



**HO-140 3-CAR "HOTSHOT" FREIGHT TRAIN--31" LONG ...**  
with "Choo-Choo," Real Smoke

Thrilling Tru-Model freight train. Same fine die-cast D.C. Power Source locomotive that's making miniature railroad history. Each of the molded cars has automatic couplers.

Set consists of: 1 HO-151 Locomotive and Tender, 14" long; 1 HO-128 "Lehigh N.E." Gondola, Gray; 1 HO-124 "Merchants Despatch" Car, White and Tuscan red; 1 HO-131 illuminated Caboose with cupola, end rails and ladders; 12 8 3/8" sections HO-260 curved track (makes 100" circle); Track Terminal.

HO-143 - same as above, but without "Choo-Choo" and smoke.



"HO" GAUGE SWITCHES

sold in pairs only

**HO-265 MANUAL CONTROL TRACK SWITCHES . . .**

Extra excitement is added to the fun of HO gauge railroading when you build the interesting track layouts these switches permit. 12 curve track form a 32" diameter circle.

**HO-268 REMOTE CONTROL TRACK SWITCHES . . .**

Equip your track layout with these fascinating remote control switches and trains obey your bidding as if by magic. The unique control box included with each pair of switches allows you to control them from a distant point. Red and Green lights on switches indicate in which direction they are set.



HO-262 90° CROSSOVER . . .

Two 8" straight track sections crossing at 90° angle make possible a variety of interesting layouts.



**Rails mounted on realistic Bakelite roadbed**

HO-261 STRAIGHT TRACK, 8" long . . .

HO-263 1/2 SEC. STRAIGHT TRACK, 4" long . . .

Better plan to get enough sections of this type so you'll have an exciting "straightaway" in your track layout.



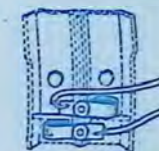
HO-260 CURVED TRACK, 8 3/8" long . . .

HO-264 1/2 SEC. CURVED TRACK, 4 3/8" long . . .

Curved track is required to build the circle which is the basic track layout. All other layouts are elaborations of the circle. 12 sections make a 32" diameter circle.

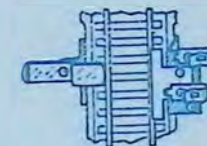


12 curve tracks form a 32" diameter circle.



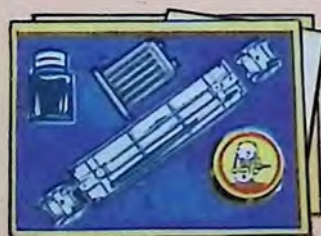
HO-250 TRACK TERMINAL . . .

May be attached to any curve section.



HO-277 TRACK TRIP . . .

Trip fits on straight section of track and completes circuit as train passes over. Operates signals or any automatic equipment.



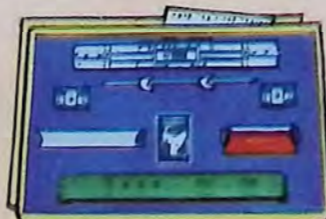
HO-129K "N.H." DROP-CENTER FLAT CAR KIT . . .

This kit builds a sturdy "New Haven" drop-center flat car that is realistic in every detail with giant transformer for load.



HO-151K "N.Y.C." (4-6-4) LOCOMOTIVE AND TENDER KIT . . .

Armature, field, gears, drive wheels assembled to engine frame. "Choo-Choo," real smoke, worm drive, Permanent Magnet motor.



HO-133K BAGGAGE AND MAIL CAR KIT . . .

Builds authentic model of popular combination car. Automatic couplers and decalcomanias are included with each of these kits. Illuminated.



HO-135K PASSENGER COACH KIT . . .

Loads of fun to put together. Sections of molded material, automatic couplers, double trucks, decalcomanias and instructions included. Illuminated.

HO-129 "N.H." DROP-CENTER FLAT CAR . . .

Black molded with white lettering. With giant transformer for load. 5 1/8" long.

HO-151 "N.Y.C." (4-6-4) LOCOMOTIVE AND TENDER . . .

Die-cast, "Choo-Choo," real smoke, worm drive, Permanent Magnet motor. Lucite headlight.

HO-133 "N.H." BAGGAGE AND MAIL CAR - 9" long . . .

Tru-Model replica in molded material, green. Two four-wheel trucks, automatic couplers. Worm drive. Illuminated.

HO-135 "N.H." PASSENGER COACH - 9" long . . .

Simulated glass windows, automatic couplers. In molded green material. Illuminated.



☆ **NEW! RECTI-FORMER** ☆

14 B POWER SOURCE . . .

Once again the Engineers at the Gilbert Hall of Science have come forth with an item that all miniature railroaders have long been waiting for - a new power source which plugs into regular 110-Volt 60-Cycle A.C. House Current and which has both a D.C. output of from 7 1/2 - 15 Volts for operating the new Permanent Magnet HO locomotives and 15-Volts A.C. output for operating accessories.

Voltage control lever shows the miles per hour trains are traveling, and by simply pushing the operating lever, you can stop the train, start it again, either forward or reverse, whichever you wish, without first going through the usual routine of a sequence switch. This is done purely electrically by changing the polarity of the current in the track.

This unit is of most recent design and is fully approved by Underwriters' Laboratories. It has a built-in thermostatic controlled circuit breaker to protect it from burning out, and is equipped with Red and Green Pilot Lights.

If your house current is D.C., use the power source with No. 10 D.C. inverter shown on page 24.



# ★ NEW ★ SUPERPOWER "SAFETY first" TRANSFORMERS

"Safety First" is the motto of the railroads, and the motto of American Flyer's engineers in perfecting these superpower "Safety First" transformers.

Output limited to 15 volts, materially reducing danger of burning out lights, motors, etc. Simplified three terminal post arrangement eliminates complicated equipment circuits. Engineer's Throttle control, standard on all models, shows "miles per hour" train is set for.

While made especially for American Flyer trains, these transformers are equally useful with other electrical toys. They operate only on alternating current.

TRANSFORMER	RECOMMENDED FOR TRAIN SETS
Nos. 5B, 6, 6A, 7B	Nos. 4601, 4602, 4603, 4604
Nos. 6, 6A, 7B, 8B	Nos. 4605, 4606, 4607, 4608, 4609, 4610, 4611, 4612, 4613
Nos. 8B, 9B, 12B	Nos. 4614, 4615, 4616, 4617, 4618, 4619, 4620, 4621
No. 12B	No. 4622

It is advisable to secure the higher wattage transformer to provide for future additions to your railroad.



**No. 5B "SAFETY FIRST" TRANSFORMER**  
50 Watts, 60 Cycles . . .  
Built-in circuit breaker protects fixed as well as variable voltage. Has re-set button.



**No. 7B "SAFETY FIRST" TRANSFORMER**  
75 Watts, 60 Cycles . . .  
Has red pilot light that shines when a short circuit occurs—and stays on until it is corrected.



**No. 8B "SAFETY FIRST" TRANSFORMER**  
100 Watts, 60 Cycles . . .  
Green pilot light shines when current is passing through; red light when there's trouble.



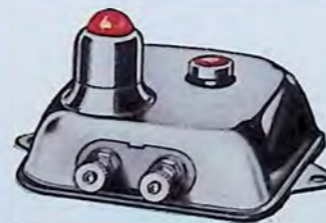
**No. 5 50 Watts, 60 Cycles . . .**  
**No. 6 75 Watts, 60 Cycles . . .**  
**No. 5A 50 Watts, 25 Cycles . . .**  
**No. 6A 75 Watts, 25 Cycles . . .**  
Built to Gilbert Hall of Science precision standards. No. 11 Transformer Circuit Breaker below recommended for protective purposes.



**No. 12B "SAFETY FIRST" NEW TWIN CONTROL TRANSFORMER**  
250 Watts, 60 Cycles . . .  
For heavy duty on large track layouts with numerous accessories. Dual speed control throttles. Operates from 2 to 4 trains on the same or 2 separate layouts and at different rates of speed. Built-in circuit breaker protects fixed as well as variable voltage. Red and green pilot lights; handy off-and-on switch.



**No. 9B "SAFETY FIRST" NEW TWIN CONTROL TRANSFORMER**  
150 Watts, 60 Cycles . . .  
Dual Speed Control Levers. Will operate 2 or 3 trains on the same or 2 separate layouts. Makes possible operation of trains on separate track layouts at different rates of speed. Besides a built-in circuit breaker and red and green pilot lights, this fine transformer has a convenient off-and-on switch.



**No. 11 "SAFETY FIRST" TRANSFORMER CIRCUIT BREAKER . . .**  
Protects transformer when short circuit occurs. The red light flashes on automatically to indicate trouble. Recommended for use with transformers Nos. 5, 5A, 6 and 6A above.

**No. 10 "SAFETY FIRST" D.C. INVERTER . . .**  
Changes direct to alternating current. Permits use of transformer and all other A. C. accessories with trains.  
Extra inverter fuses (No. 541) . . .



All American Flyer "Safety First" Transformers are approved by the Underwriters' Laboratories

## 3/16" SCALE



American Flyer Cars are built from actual railroad blueprints and made to uniform 3/16" scale. Thus, every car is the correct size from end to end and correctly proportioned to all the other American Flyer cars.



Molded plastic construction makes possible new lightness of weight and new beauty of finish. These ultra modern cars are actually one-third the weight of die cast cars, and their permanent colors cannot flake or chip.



Even such fine details as brake wheels, ladders, journal boxes and rivet heads are accurate reproductions of the real thing.



All cars are equipped with automatic couplers, and can be coupled anywhere on the new two-rail track.



*Make a list of the cars you need then add a new car every month.*

# MODEL ROLLING STOCK and ACTION CARS



**No. 651 BAGGAGE CAR . . .**  
Double truck, nickel journal boxes, eight wheels. Red or green. 10 $\frac{3}{4}$ " long.



**No. 631 GONDOLA CAR . . .**  
Sturdily constructed from railroad blue-prints. Has brake wheel. Green. 8".



**No. 629 CATTLE CAR . . .**  
Has brake wheel, ladder, door you can open or shut. Red. 7 $\frac{1}{16}$ " long.



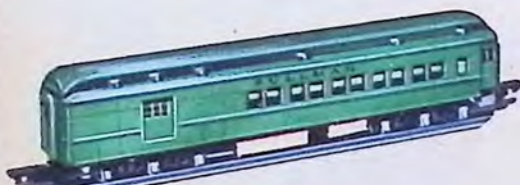
**No. 650 COACH with light . . .**  
Double truck, nickel journal boxes. Red or green. 10 $\frac{3}{4}$ " long.



**No. 627 GIRDER CAR . . .**  
Loaded with a realistic bridge girder. Has brake wheel. Gray chassis, red girder. 8 $\frac{3}{4}$ " long.



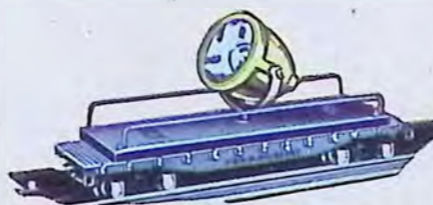
**No. 628 LOG CAR . . .**  
Has brake wheel and six realistic logs. Gray chassis. 8 $\frac{3}{4}$ " long.



**No. 653 BAGGAGE AND CLUB CAR with light . . .**  
Sliding and hinged doors. Red or green. 12" long.



**No. 630 CABOOSE . . .**  
Illuminated. Nickel journal boxes, eight wheels. Red. 6" long.



**No. 634 ARMY SEARCHLIGHT CAR . . .**  
Turns and tilts on swivel base. Gray chassis, black platform, yellow lamp housing. 8 $\frac{3}{4}$ " long.



**No. 652 PULLMAN with light . . .**  
Like real — even to the imitation window shades! Red or green. 12" long.



**No. 625 TANK CAR . . .**  
Has ladders, hand rail and brake wheel. Orange with black chassis. 7 $\frac{5}{8}$ " long.



**No. 633 BOX CAR . . .**  
Has ladder, brake wheel. Sliding doors add to the fun. White sides, red roof. 7 $\frac{1}{16}$ " long.



**No. 654 OBSERVATION CAR with light . . .**  
Observation platform, imitation window shades. Red or green. 11 $\frac{1}{16}$ " long.



**No. 632 HOPPER CAR . . .**  
Nickel journal boxes, ladder, eight wheels. Gray. 6 $\frac{3}{8}$ " long.

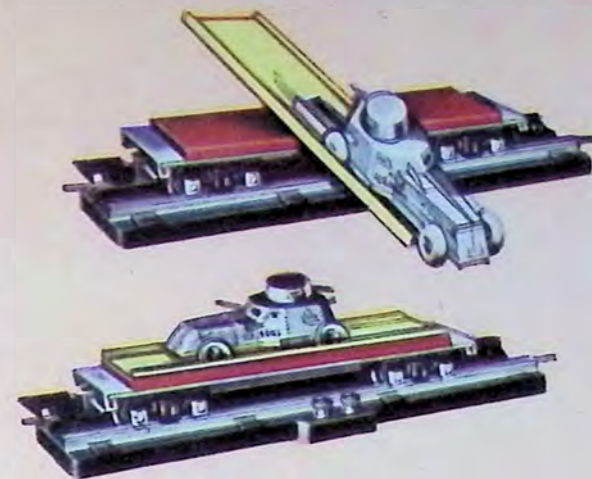


**No. 635 WRECKER CAR . . .**  
Cab and boom turn on swivel base; boom and hook raise and lower. Gray chassis, green boom, yellow house, red roof. 8 $\frac{3}{4}$ ".

**No. 715 ARMY UNLOADING CAR . . .**

Includes automatic track section, single button control box.

Platform on car swivels, tilts, shoots armored truck down incline when you press remote control button. 7 $\frac{3}{4}$ " long.



*Automatic Action!*

**No. 718 MAIL PICK-UP AND DISCHARGING CAR . . .**

Includes special track section, single button control box.

By remote control the car's metal pick-up arm extends, picks up one mailbag as another is ejected. Red and green. 10 $\frac{3}{4}$ ".

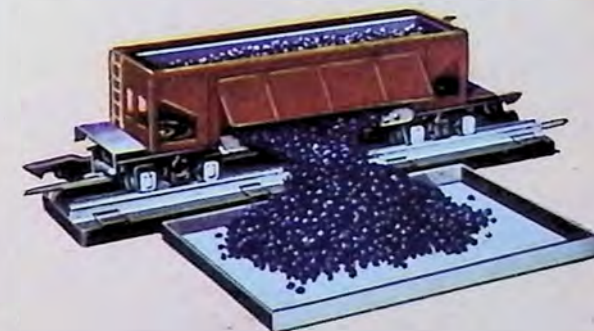


*Automatic Action!*

**No. 716 AUTOMATIC COAL DUMP CAR . . .**

Includes automatic track section, imitation coal, bin, single button control box.

Side swings open via remote control, coal pours out into unloading bin. Tuscan red outside, black inside. 7 $\frac{5}{8}$ " long.

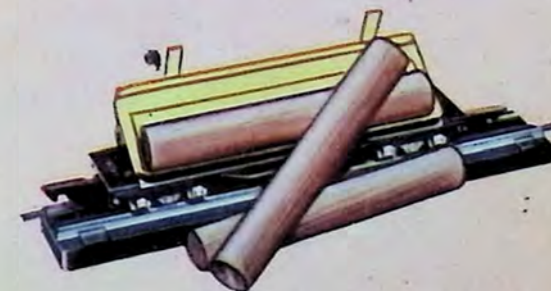


*Automatic Action!*

**No. 717 LOG UNLOADING CAR . . .**

Includes automatic track section, single button control box, three realistic logs.

Holds 3 logs which are dumped to ground by remote control. Black chassis, yellow platform. 7 $\frac{1}{16}$ " long.



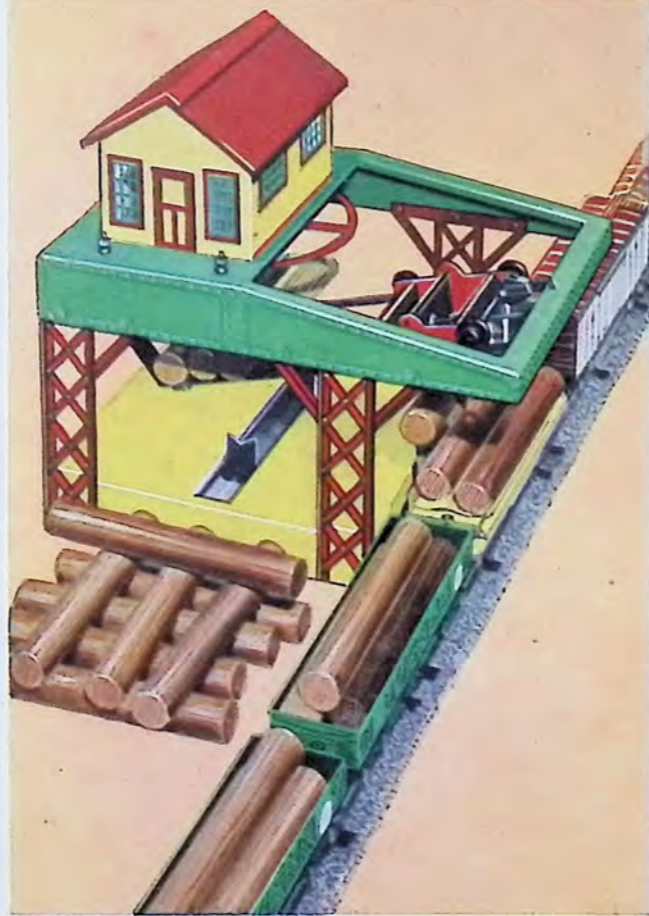
**No. 752 AUTOMATIC SEABOARD COALER . . .**

Bucket drops to coal pile — jaws open and snap together when full. Loaded bucket is then hoisted to top of tower, dumping coal into chute leading to car below. Remote control. Size 8 $\frac{5}{8}$ " x 10 $\frac{1}{4}$ " x 16 $\frac{1}{2}$ ".



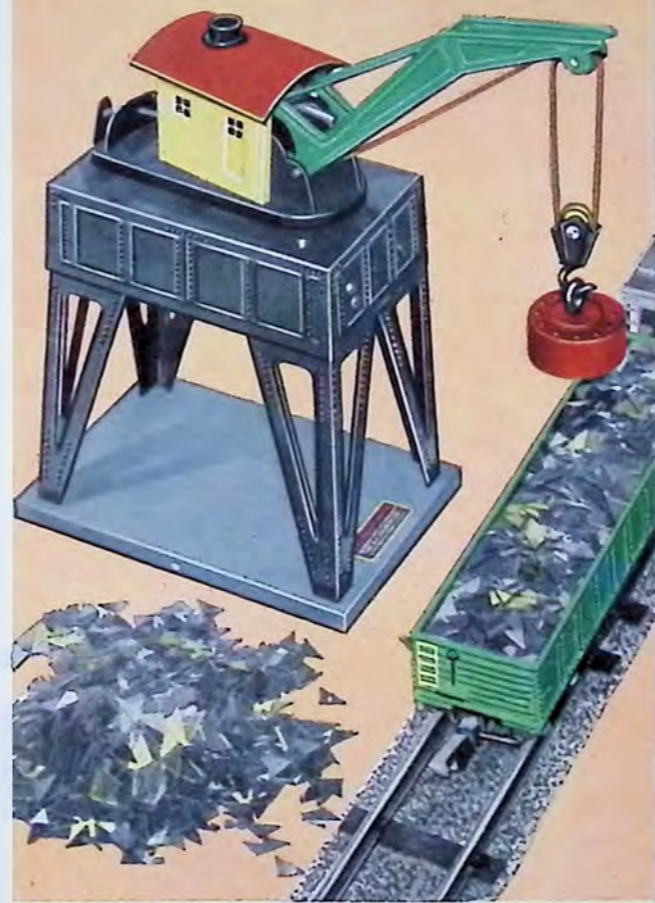
**No. 751 AUTOMATIC LOG LOADER . . .**

Elevator lifts log to overhead conveyor, which carries it underneath roof to end of arms and drops log into car below. Action directed by two remote control push buttons. Size 8 $\frac{7}{8}$ " x 11 $\frac{1}{2}$ " x 11".



**No. 583 ELECTROMATIC CRANE . . .**

Grabs up load of steel by powerful electro magnet — hoists it high in the air — swings over car — lowers — and drops metal into car. Every movement controlled by remote control. Size 11" x 4" x 6".



# EQUIPMENT FOR $\frac{3}{16}$ " SYSTEMS

(Also suitable for use with "0" gauge system)



*Sensational Action*



remote or automatic control



TRUE-TO-LIFE-DESIGN



FINISHED IN BRILLIANT COLORS



ALL UNITS BUILT TO UNIFORM SCALE  
FOR VIVID PICTURESQUE REALISM

**BULBS — ALWAYS HAVE EXTRAS ON HAND**

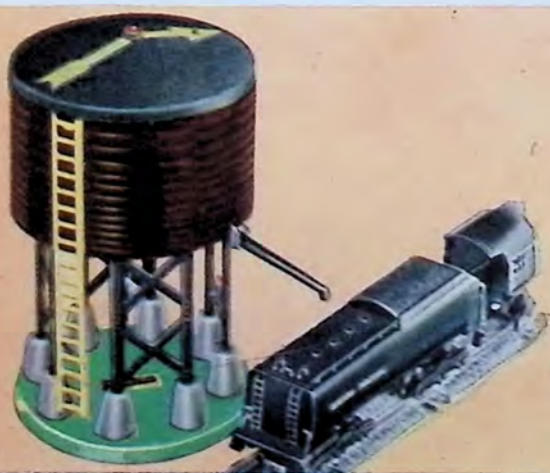
Lamps are used as follows: No. 440 in all Locomotives and cars, all stations and equipment except Nos. 579, 580 and 588. No. 451 for No. 579 and No. 580 amp posts. No. 441 where Red globes are required. No. 443 where Green globes are required. No. 452 for No. 588 Semaphore.

No.	Volts	Glass	Color	Diam.	Lamps in Pkg.
440	14	Round	Clear	$\frac{7}{16}$ "	3 . . . . .
441	18	Round	Red	$\frac{7}{16}$ "	3 . . . . .
443	18	Round	Green	$\frac{7}{16}$ "	3 . . . . .
451	14	Round	Frosted	$\frac{5}{8}$ "	1 . . . . .
453	18	Min. Round	Clear	$\frac{5}{16}$ "	1 . . . . .

**No. 596. WATER TANK . . .**

Includes Track Terminal, Push Button

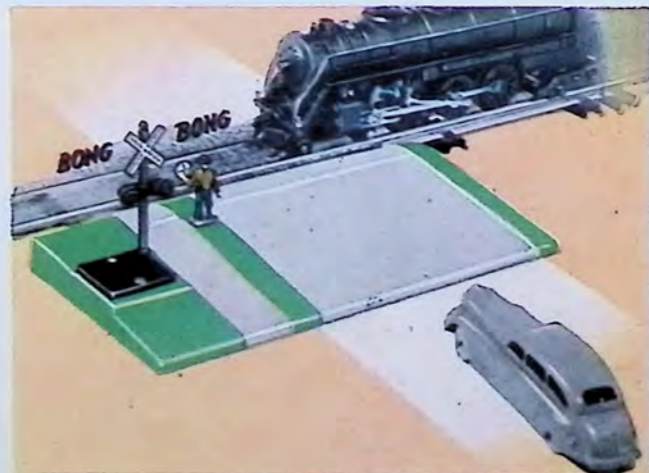
Lower, raise water spout by remote control. Aviation warning light on top of tank. Size 11" x 6" x 6 $\frac{1}{2}$ ".



**No. 584 BELL DANGER SIGNAL . . .**

with Automatic Track Trip

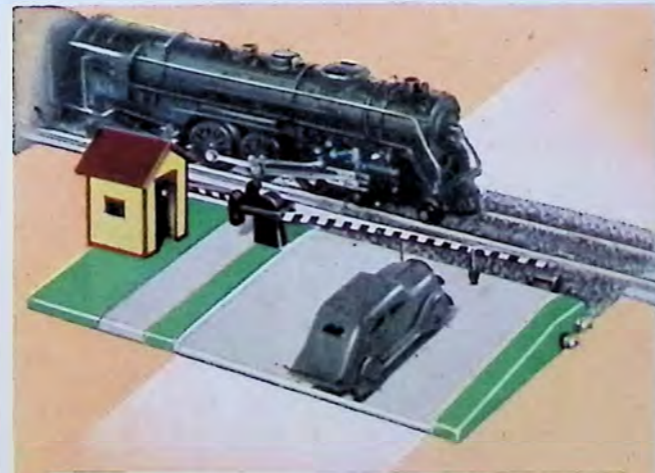
Lucite blinking signal and sharp warning bell that rings as trains pass by. Complete with watchman. Brilliant enamel finish. Size 10" x 5 $\frac{1}{4}$ ".



**No. 591 CROSSING GATE . . .**

with Watchman's Shack

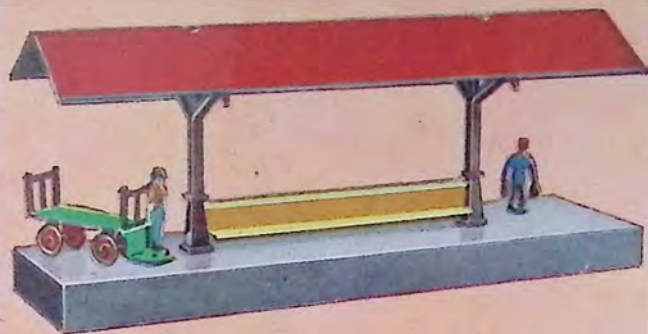
Your speeding train automatically controls raising and lowering of double arm gates. Red light shines when gate is down. Die cast. Size 10" x 5 $\frac{1}{4}$ ".





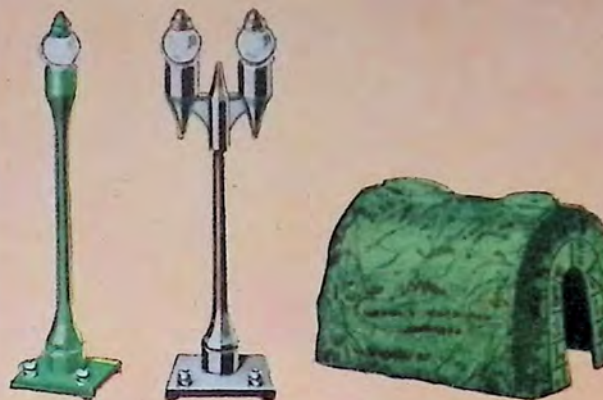
**No. 612 FREIGHT AND PASSENGER STATION with CRANE . . . .**

Track terminal included. Passenger section illuminated. Freight section has raised loading platform, sliding doors. Hand-operated crane has swivel base, boom that raises, lowers. Size 19" x 8" x 5 1/4".



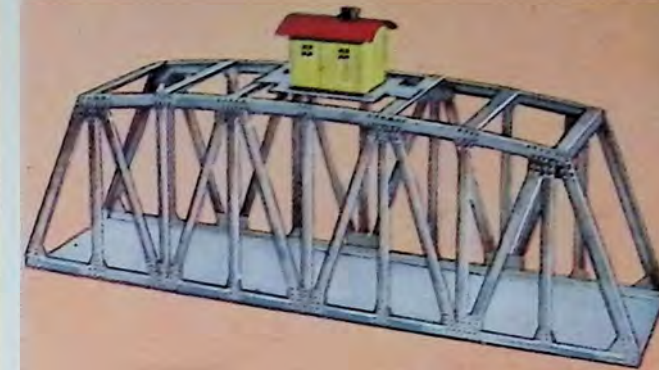
**No. 586F WAYSIDE STATION with FIGURES . . . .**

Smart new suburban station with baggage truck, operator and porter. Double bench, long roof and two lights. Enamel finish. Size 12" x 5" x 3 3/4".



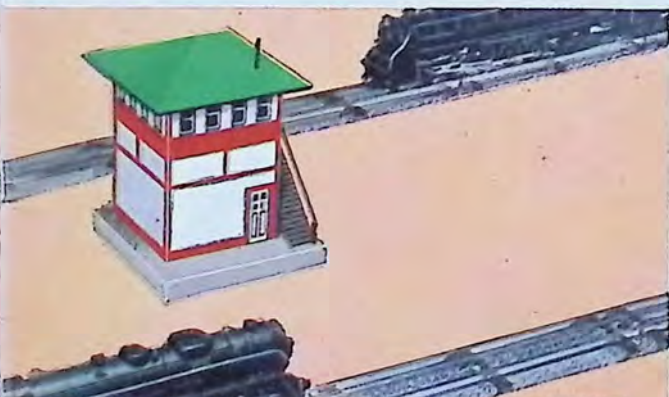
**No. 579 SINGLE STREET LIGHT . . . .  
No. 580 DOUBLE STREET LIGHT . . . .  
With Track Terminal**

Electrical contact through terminals in sturdy base. No. 247 TUNNEL (11" straight) No. 248 TUNNEL (14")



**No. 750 TRESTLE BRIDGE . . . .**

Includes track terminal. Built of heavy steel. The tender's house has an interior light on the top. Bright enamel finish. Size 17 3/4" x 8 1/4" x 4 1/4".



**No. 593 SIGNAL TOWER . . . .  
With Track Terminal.**

A stairway leads up to the lighted operators' room on the second floor. Windows on three sides. Brilliantly colored enamel finish. Size 7 3/8" x 5 1/2".



**No. 589 PASSENGER AND FREIGHT STATION  
Includes Track Terminal . . . .**

Big passenger station with realistic windows, swinging door and interior illumination. Brilliantly enameled. Size 6" x 12" x 8".



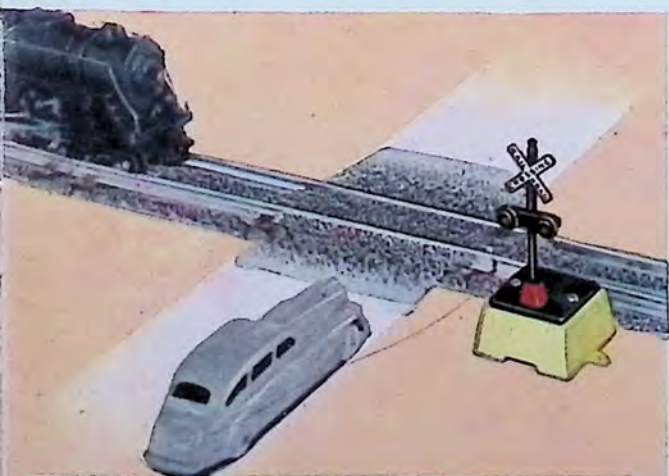
**No. 577 WHISTLING BILLBOARD . . . .  
(remote or automatic control)**

Includes automatic track trip and signal control box. Whistles any time by remote control or automatically through a track trip. Illuminated. Size 4" x 7 1/2" x 4".



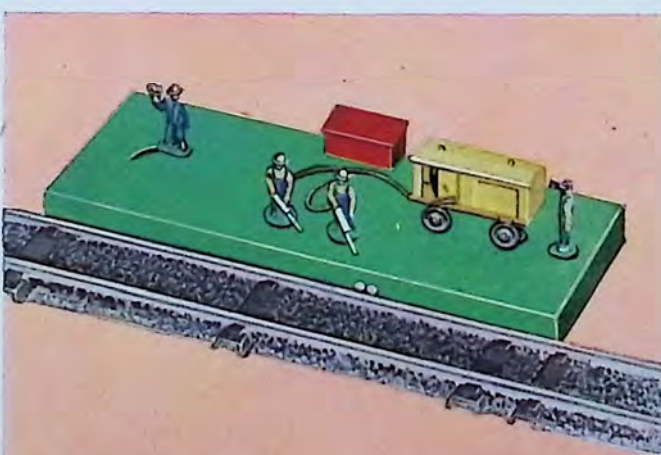
**No. 585 TOOL SHED . . . .**

Has bright enamel finish, plastic roof and sliding door. Adds realism to sidings, classification yards, etc. Size 4 1/2" x 6 3/4" x 5 1/4".



**No. 582 AUTOMATIC BLINKER SIGNAL . . . .  
With automatic track trip.**

Double bull's eye Lucite blinkers flash red automatically as train passes. Mounted on sturdy base. Enamel finish. Size 4 1/8" x 2 3/8" x 2 3/16".



**No. 594 TRACK GANG SET (animated) . . . .**

As train approaches, flagman moves forward, tampers move back, stop work. After train passes, men start work. Has shut-off switch. Size 10" x 3 3/4" x 2 1/2".



**No. 578 STATION FIGURE SET . . . .**

The set comprises six hand painted workers, a platform truck, two milk cans and a barrel. They add great realism to your railroad scenes.



**No. 581 GIRDER BRIDGE . . . .**

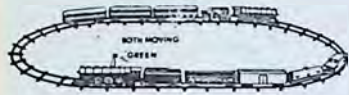
Sturdy, strong, modern girder type. Slips easily under any straight track section. Finished in black and perfect in every detail. Size 10" x 1 3/4" x 4 1/2".

# TRACKS - SWITCHES - TRACK CONTROLS for exciting realistic action

## AUTOMATIC BLOCK SIGNAL SYSTEM

*makes trains stop and go as lights flash red and green*

When operating two trains on single track, signal system automatically stops rear train when it approaches block occupied by first train. When block is clear, light turns green, and rear train automatically resumes run.



When running one train you can make the lights flash red and green and raise and lower the semaphore arm — by remote control . . . letting block semaphore signals stop and start your train.

Note—On trains equipped with standard remote control, it is necessary to disengage the control manually to permit the train to operate automatically with block signals and other train controlling equipment.

Get the thrill of highballing two trains on the same track without danger of collision

## NEW DOUBLE-ACTION REMOTE CONTROL SWITCHES

*A sensational American Flyer development*



*Make one train roar around the track while keeping another train idle on siding*

By simply throwing these amazing switches at the right moment you can stop one train — start another—just as a towerman "bends the iron" in a real railroad control room. For example: An express is hitting the curves on the main line. A freight on a siding gets under way. The switch ahead is open. A collision seems certain. But . . . with switch control lever you close the open switch, automatically stopping the freight. The express whizzes by. When the main line is clear, you open your switch, start your freight rolling. Readily set for conventional operation or for dead siding.

## AUTOMATIC COUPLERS AND ELECTRIC UNCOUPLING

*Uncouple cars instantly by pressing remote control button*



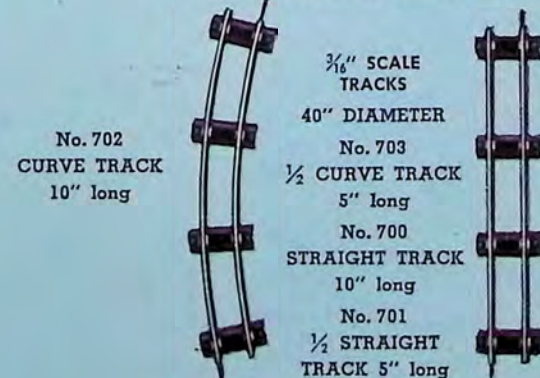
*Pick up a drag on curves — sidings — anywhere*

Coupling and uncoupling cars is a big part of the fun of railroading. Just run your train to the car or cars you want to pick up and click — the automatic couplers snap together. To uncouple, press a button — your cars disengage when they pass over the uncoupling unit which is built into a straight section of track and which you can install at any point in your layout.

No. 722 MANUAL PAIR SWITCHES not illustrated . . . Similar in construction to the electric switches, but operated by hand. No lights included.



No. 720 PAIR SWITCHES (remote control) . . . Quick action electric switches with red and green lights, new remote control box with two switch control levers. Lights stay on when train is shut off.



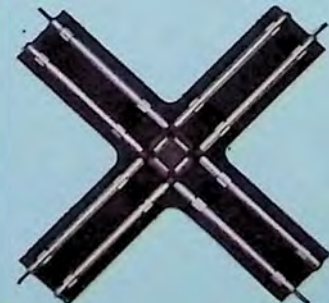
No. 702 CURVE TRACK 10" long

3/8" SCALE TRACKS 40" DIAMETER

No. 703 1/2 CURVE TRACK 5" long

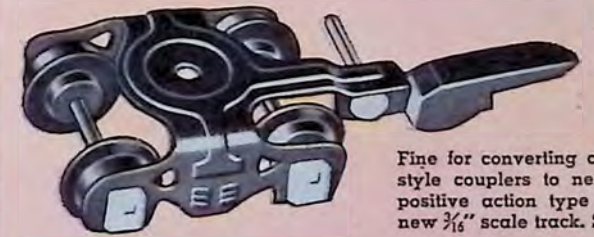
No. 700 STRAIGHT TRACK 10" long

No. 701 1/2 STRAIGHT TRACK 5" long

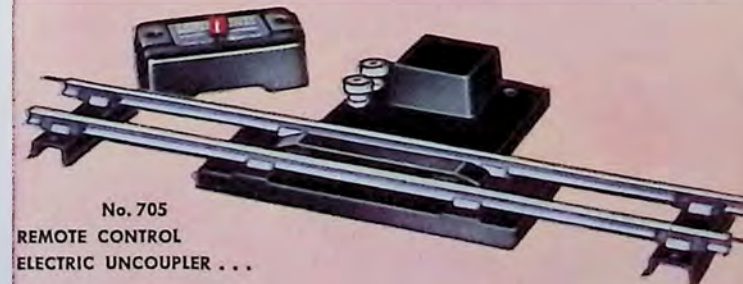


No. 725 CROSSOVER—90° . . . Seeing trains cross in front of each other adds spectacular drama to your railroad system. Unit consists of two straight sections of track, each 10" long, at 90°.

No. 694 AUTOMATIC COUPLERS, TRUCKS, WHEELS AND AXLES . . .



Fine for converting cars with old style couplers to new automatic positive action type that will fit new 3/16" scale track. Sold in pairs.



No. 705 REMOTE CONTROL ELECTRIC UNCOUPLER . . .

A new type — built into 10" straight track section. Operates only with new style American Flyer automatic couplers. Complete with electric control button.



No. 730 BUMPER . . . Easily snapped on and off. Equipped with recoil spring.

28

No. 695 AUTOMATIC TRACK TRIP Fits into straight track section, completes circuit as train passes. Operates gate signals or other automatic equipment

No. 690 TRACK TERMINAL . . .

No. 691 12 STEEL TRACK PINS . . .

No. 692 4 FIBER TRACK PINS . . .

No. 587 BLOCK SIGNAL . . .

Searchlight type. Operated like a real signal system. Permits one train to follow another on single track without danger of collision. Light flashes red and green. Electrically operated by remote control for one train. Two train operation works automatically from trips in track. Enamel finish. Size 5 1/2" high, base 1 3/4" x 1 3/4".

No. 588 SEMAPHORE BLOCK SIGNAL . . .

Realistic operation. Semaphore arm goes horizontal, light to red to stop train—raises to vertical, light to green to proceed. Electrically operated by remote control for one train. Two train no-collision operation works automatically from track trips. Enamel finish. Size 7 1/2" high, base 1 3/4" x 1 3/4".

Both equipped with two automatic track trips and remote control box.

# TRACK LAYOUTS

The fun and realism of operating a scale model railroad increases with your trackage.

Every American Flyer train set includes enough straight and curved track sections to make a single circle. But think of the spectacular things you can do by adding switches and extra track sections.

For example, only one switch and several straight sections give you a siding. A second switch and more track permit an inside siding connected to the main track at both ends. You can make your train run over the main line one time—then over the siding.

Now think of the glory of owning a system with double loops, several sidings, crossovers and switches. Look at the layouts on this page and the next. Imagine several trains tearing down the straight-aways—crawling into sidings—and performing other miracles on the high iron!

Why not add a certain number of track sections each month? See how rapidly your system will grow into the railroad empire of your dreams.



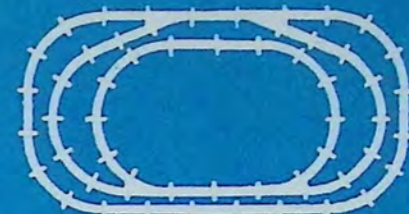
**No. 1**  
Space—40" x 40"  
Track  
12—Curve



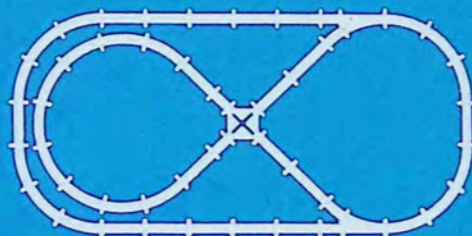
**No. 2**  
Space—40" x 90"  
Track  
20—Curve  
6—Straight  
2—Pair of Switches



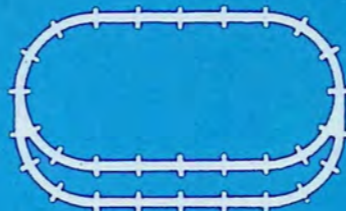
**No. 3**  
Space—40" x 100"  
Track  
14—Curve  
12—Straight  
1— $\frac{1}{2}$  Straight  
1—Pair of Switches



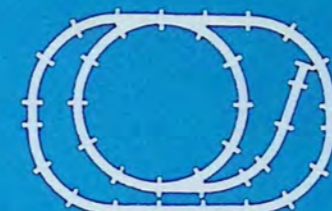
**No. 9**  
Space—50" x 80"  
Track  
32—Curve  
18—Straight  
2—Pair of Switches



**No. 5**  
Space—52" x 108"  
Track  
21—Curve  
18—Straight  
4— $\frac{1}{2}$  Straight  
2— $\frac{1}{2}$  Curve  
1—Pair of Switches  
1—Crossover



**No. 8**  
Space—50" x 80"  
Track  
16—Curve  
12—Straight  
1—Pair of Switches



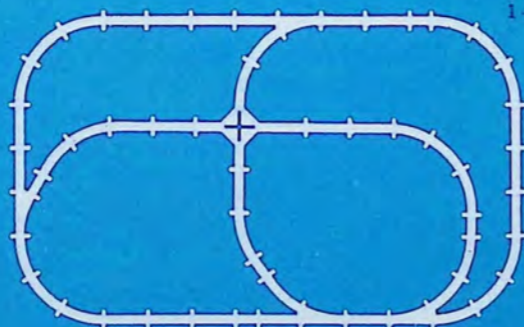
**No. 28**  
Space—45" x 70"  
Track  
23—Curve  
5—Straight  
3— $\frac{1}{2}$  Straight  
1— $\frac{1}{2}$  Curve  
2—Left Switches  
1—Right Switch



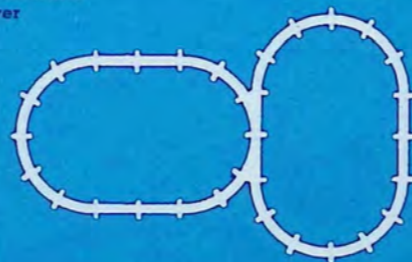
**No. 25**  
Space—50" x 70"  
Track  
20—Curve  
8—Straight  
3—Left Switches  
2—Right Switches



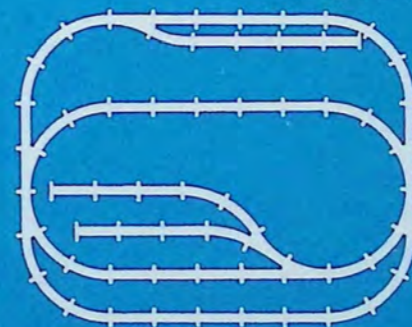
**No. 6**  
Space—40" x 96"  
Track  
18—Curve  
4—Straight  
4— $\frac{1}{2}$  Straight  
1—Crossover



**No. 4**  
Space—70" x 115"  
Track  
23—Curve  
22—Straight  
7— $\frac{1}{2}$  Straight  
2—Pair of Switches  
1—Crossover



**No. 17**  
Space—60" x 100"  
Track  
22—Curve  
6—Straight  
1—Pair of Switches



**No. 24**  
Space—70" x 90"  
Track  
30—Straight  
24—Curve  
5—Right Switches  
2—Left Switches



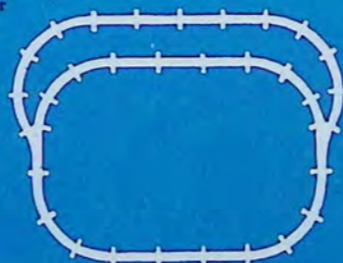
**No. 11**  
Space—40" x 80"  
Track  
20—Curve  
2—Straight



**No. 12**  
Space—50" x 80"  
Track  
20—Curve  
10—Straight  
1—Pair of Switches



**No. 27**  
Space—50" x 70"  
Track  
18—Curve  
16—Straight  
3—Pair of Switches



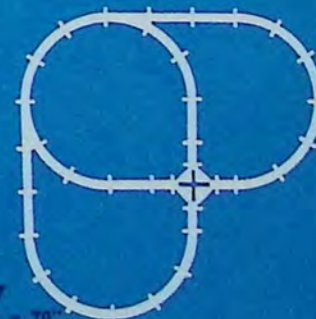
**No. 14**  
Space—60" x 85"  
Track  
20—Curve  
10—Straight  
1—Pair of Switches



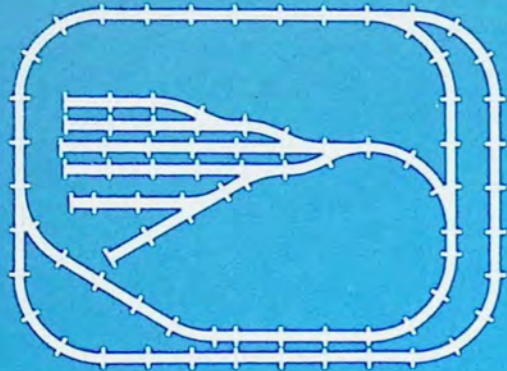
**No. 15**  
Space—45" x 90"  
Track  
22—Curve  
6—Straight  
2—Pair of Switches



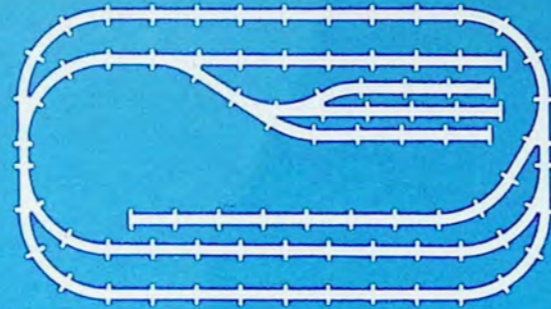
**No. 26**  
Space—50" x 70"  
Track  
19—Curve  
14—Straight  
1— $\frac{1}{2}$  Straight  
4—Left Switches  
2—Right Switches



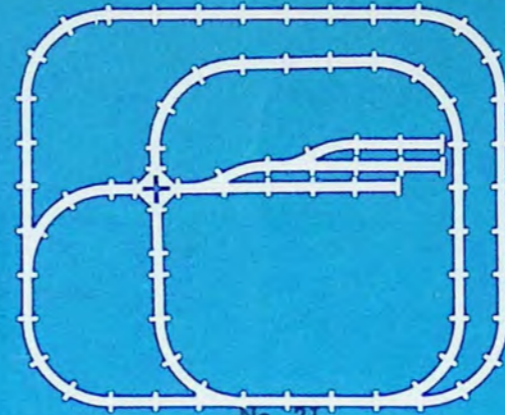
**No. 7**  
Space—70" x 70"  
Track  
19—Curve  
6—Straight  
4— $\frac{1}{2}$  Straight  
1—Pair of Switches  
1—Crossover



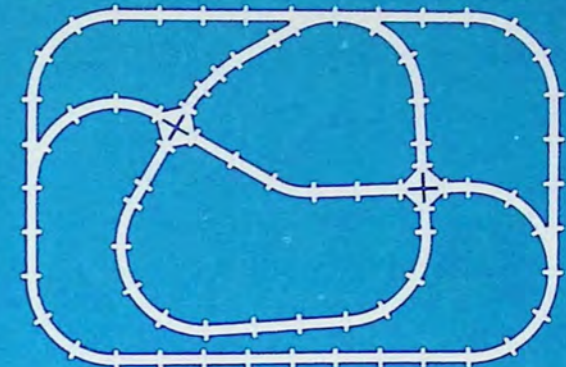
**No. 31**  
 Space—80" x 110"  
 Track  
 46—Straight  
 24—Curve  
 4— $\frac{1}{2}$  Straight  
 4—Pair of Switches



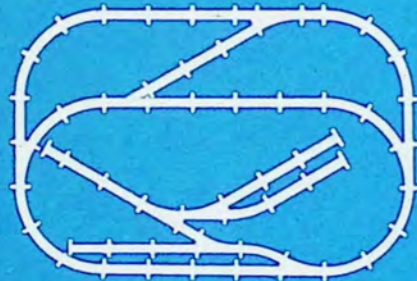
**No. 30**  
 Space—65" x 120"  
 Track  
 22—Curve  
 52—Straight  
 4—Right Switches  
 3—Left Switches  
 2— $\frac{1}{2}$  Straight



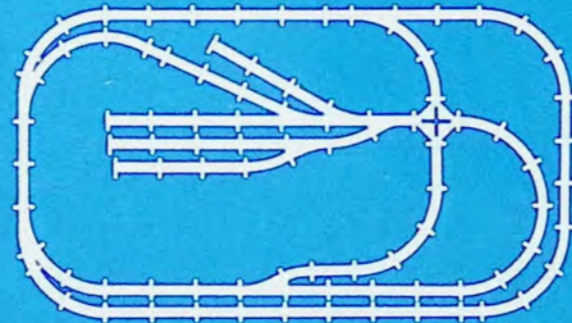
**No. 21**  
 Space—90" x 110"  
 Track  
 39—Straight  
 26—Curve  
 3— $\frac{1}{2}$  Straight  
 2—Right Switches  
 3—Left Switches  
 1—Crossover



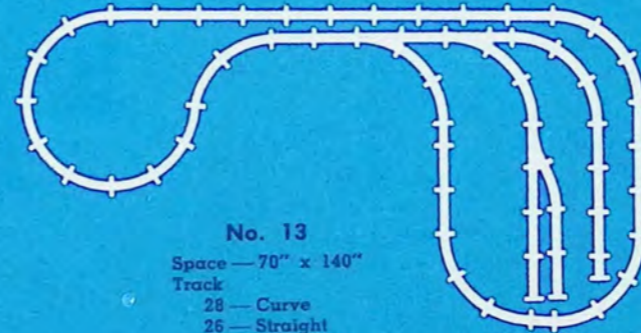
**No. 16**  
 Space—80" x 120"  
 Track  
 30—Straight  
 27—Curve  
 6— $\frac{1}{2}$  Straight  
 2— $\frac{1}{2}$  Curve  
 2—Pair of Switches  
 2—Crossovers



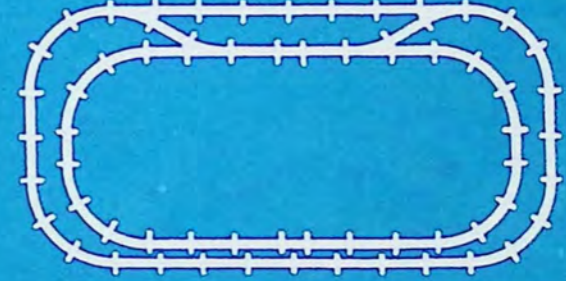
**No. 22**  
 Space—60" x 90"  
 Track  
 26—Straight  
 18—Curve  
 4— $\frac{1}{2}$  Straight  
 5—Left Switches  
 3—Right Switches



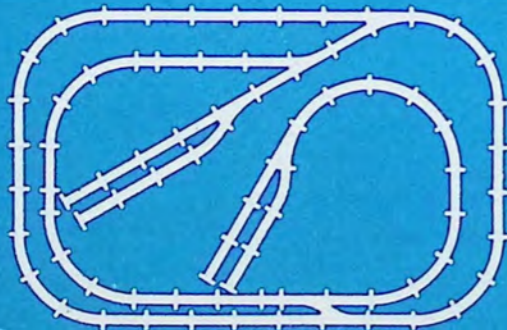
**No. 10**  
 Space—72" x 128"  
 Track  
 28—Curve  
 46—Straight  
 3— $\frac{1}{2}$  Straight  
 3— $\frac{1}{2}$  Curve  
 4—Pair of Switches  
 1—Crossover



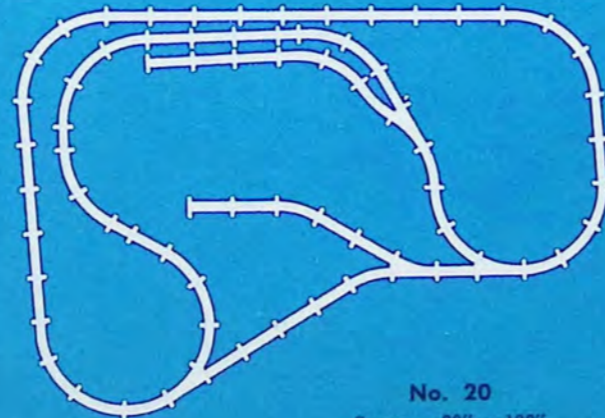
**No. 13**  
 Space—70" x 140"  
 Track  
 28—Curve  
 26—Straight  
 4— $\frac{1}{2}$  Straight  
 2—Right Switches  
 1—Left Switch



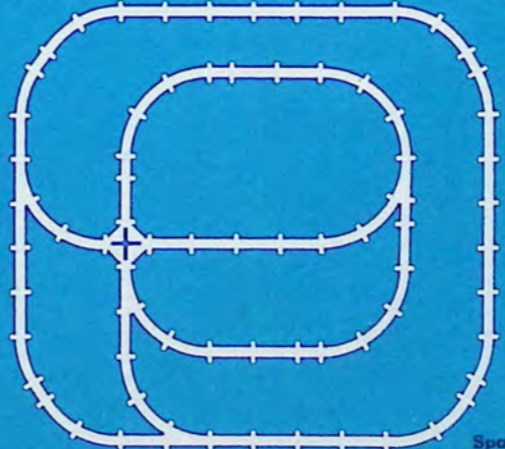
**No. 23**  
 Space—60" x 120"  
 Track  
 24—Curve  
 32—Straight  
 2— $\frac{1}{2}$  Straight  
 2—Pair of Switches



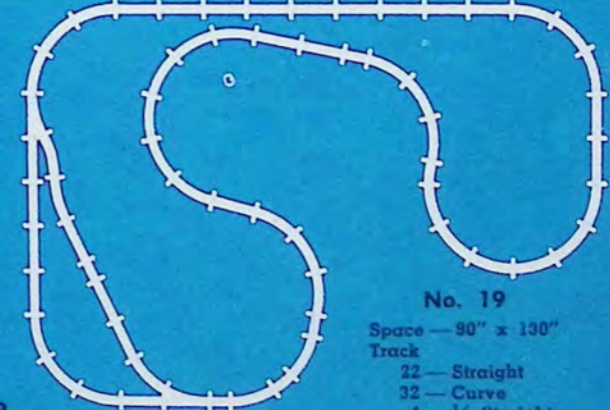
**No. 18**  
 Space—70" x 110"  
 Track  
 28—Curve  
 41—Straight  
 3— $\frac{1}{2}$  Straight  
 3—Pair of Switches



**No. 20**  
 Space—90" x 130"  
 Track  
 33—Straight  
 31—Curve  
 3— $\frac{1}{2}$  Straight  
 2—Pair of Switches



**No. 29**  
 Space—100" x 106"  
 Track  
 31—Straight  
 29—Curve  
 8— $\frac{1}{2}$  Straight  
 2—Pair of Switches  
 1—Crossover



**No. 19**  
 Space—90" x 130"  
 Track  
 22—Straight  
 22—Curve  
 4— $\frac{1}{2}$  Straight  
 2— $\frac{1}{2}$  Curve  
 1—Pair of Switches

# ERECTOR

DEVELOPED AT THE  
GILBERT HALL OF SCIENCE

THEY  
WHISTLE

THEY'RE  
ALL-  
ELECTRIC

THEY  
BUZZ  
WITH ACTION



*Hello  
Boys!*

LOOK AT THE COLOSSAL  
ENGINEERING MARVELS  
YOU CAN BUILD WITH

**THE NEW SUPER-MECHANIZED ERECTOR.**

Take a good look at that towering Erector army training parachute jump with its four realistic paratroopers. You build it yourself. Piece by piece—with your own hands—you fit the long gleaming girders together. Then you attach the rigging for the four parachutes and install the powerful Erector reversing electric engine. Now for the thrill of your life! Call for action by blowing your Erector whistle . . . throw your engine into gear . . . and your parachutes are hoisted up and up until they strike the release mechanism. Then, like a flash, they plummet down—unfold—and lazily float to the ground.

Now get a load of that mighty Ferris wheel. It whistles—twinkles with light—operates in either direction at slow and high speed, as you shift gears on your marvelous Erector engine.

You can build hundreds of spectacular mechanical marvels with one Erector set. And how the Erector engine makes them buzz with action. See the new super-mechanized Erectors at your nearest toy store.

THE A. C. GILBERT COMPANY  
Erector Square • New Haven, Conn.

The fun of building realistic action models with Erector starts the moment you lift the lid of the big metal box and begin to assemble the fascinating array of girders, wheels, gears and other parts. One thrill follows another as you build bridges that open and close—cranes that hoist, swivel and pick up metal by electromagnetic power—and dozens of other colossal, whistling, engine-driven, electrically lighted engineering marvels.



FROM THE GILBERT HALL OF SCIENCE COMES THE WORLDS' GREATEST ARRAY OF PRECISION-MADE SCIENTIFIC TOYS



Back of every product manufactured by the enormous factories of The A. C. Gilbert Company is the Research Department of the Gilbert Hall of Science. Here skilled engineers and other technical experts devote their full time and ingenuity to creating new and ever-better scientific toys. Always look for the words on the box "DEVELOPED AT THE GILBERT HALL OF SCIENCE." They mean it is the finest made.

ERECTOR  
 AMERICAN FLYER TRAINS  
 GILBERT CHEMISTRY SETS  
 ERECTOR JUNIOR  
 ERECTOR BRIK  
 GILBERT BABYKINS  
 GILBERT KIDDIKINS  
 GILBERT ELECTRICAL SETS  
 GILBERT ELECTRIC EYE  
 GILBERT TELE-SET

GILBERT TELEPHONE SET  
 GILBERT MOTORS  
 GILBERT KASTER KITS  
 GILBERT GLASS BLOWING  
 GILBERT MINERALOGY  
 GILBERT MICROSCOPE SETS  
 GILBERT TOOL CHESTS  
 AND BENCHES  
 GILBERT MYSTO MAGIC SETS  
 GILBERT PUZZLES AND TRICKS

GILBERT GYROSCOPE TOP SET  
 \*  
 GILBERT AND POLAR CUB  
 ELECTRIC FANS  
 GILBERT KITCHEN KITS  
 GILBERT VITALATORS  
 AND VIBRATORS  
 GILBERT ELECTRIC DRILLS  
 OTHER GILBERT ELECTRIC  
 APPLIANCES

THE A. C. GILBERT COMPANY • ERECTOR SQUARE, NEW HAVEN, CONN.