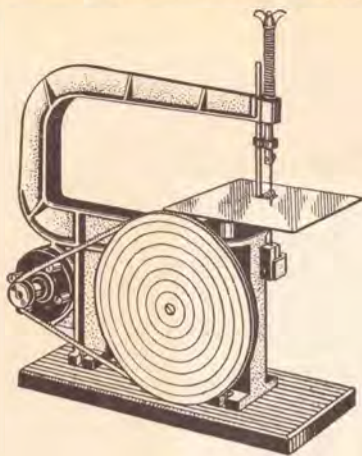


42nd and 43rd PRIZES
No. 10 Gilbert Motor Driven Jig Saw

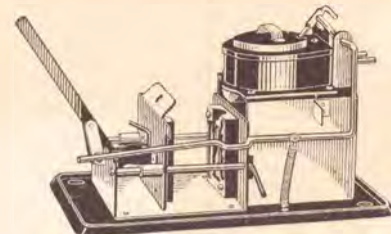


Here's a Jig Saw that's big, sturdy, powerful and speedy. Make your own Jig Saw Puzzles or Novelties. Cuts with absolute precision. Scientifically designed C-frame with reinforced cross sections—6½" square steel work table—spring tension on saw, instantly adjusted—adjustable presser foot for holding work in position and equipped with roll guide to protect saws against breakage. Cast-iron drive wheel with sandpaper discs for smoothing wood work. Powered with 110-volt motor. Simple oscillating motion, minimum vibration.

- PRIZES—44 and 45
No. 8 Gilbert Bench Type Tool Chest
- PRIZES—46 and 47
No. 10 Gilbert Chemistry Set
- PRIZES—48 to 61 inclusive
No. 5 Gilbert Motor Driven Jig Saw
- PRIZES—62 to 86 inclusive
No. 5 Gilbert Electrical Set
- PRIZES—87 to 93 inclusive
No. 5 Gilbert Metal Tool Chest
- PRIZES—94 to 97 inclusive
No. 6 Gilbert Chemistry Set
- PRIZES—98 to 102 inclusive
No. 5 Gilbert Magic Set
- PRIZES—103 to 107 inclusive
No. 5 Meccano Microscope Set
- PRIZES—108 to 115 inclusive
No. 3 Twenty Grand Racing Game
- PRIZES—136 to 185 inclusive
No. 3 Gilbert Metal Tool Cabinet
- PRIZES—186 to 195 inclusive
No. 3 Gilbert Magic Set
- PRIZES—196 to 215 inclusive
No. 3 Gilbert Chemistry Set

- PRIZES—216 to 315 inclusive
No. 2 Gilbert Metal Tool Cabinet
- PRIZES—316 to 325 inclusive
No. 2 Meccano Microscope
- PRIZES—326 to 340 inclusive
No. 3A Gilbert Magic Set
- PRIZES—341 to 370 inclusive
No. 3 Kaster Kit Jr.
- PRIZES—371 to 470 inclusive
No. 2 Gilbert Pak o' Fun Moovy Sho
- PRIZES—471 to 520 inclusive
Gilbert No. P50 110-volt Electric Motor
- PRIZES—521 to 620 inclusive
No. 1 Metal Casting Outfit
- PRIZES—621 to 720 inclusive
No. 1 WB Gilbert Pak o' Fun Moovy Sho
- PRIZES—721 to 820 inclusive
No. 1 Gilbert Chemistry Set
- PRIZES—821 to 920 inclusive
No. 1 Gilbert Magic Set
- PRIZES—921 to 1021 inclusive
No. 1 Meccano Microscope

PRIZES—116 to 135 inclusive
No. 5 Gilbert Electric Kaster Kit



Complete outfit for casting soldiers, animals, Indians and other metal toys and novelties quickly and easily. Very simple to operate. Heat is supplied by a built-in electric heating unit, "standardized" for use with regular cord and plug cap. A real die-casting machine, simplified for children. Complete with one mould, 8 pigs of metal, instruction manual and complete set of handling and mould-cleaning tools. Extra moulds and pigs purchased separately.

BE SURE AND READ EVERY WORD CAREFULLY
CONTEST RULES

- 1 Purpose of Contest.** The purpose of the contest is to develop new and original models of machinery, engineering projects or structures that can be made with metal construction toys of the Erector type.
- 2 Who May Compete.** The contest is open to all boys and girls not over 15 years of age by the time the contest closes (April 30, 1934).
- 3 Entry Blank.** Every entry must be accompanied by an "Official Entry Blank." You will find an Entry Blank at the bottom of this page. Fill this in, then cut it out along the lines as indicated and mail it with a photograph or drawing of your model. (If additional Entry Blanks are needed, they may be secured, without charge, from your local store carrying Erector or direct from The A. C. Gilbert Company.)
- 4 Don't Send Models.** Send only a drawing, sketch or photograph of your model. A photograph size 5 x 7 inches is preferred, but this is not required.
- 5 Number of Models.** Not more than three models may be entered in the contest by any one boy or girl.
- 6 How to Send Photographs or Drawing.** Be sure to write your name and address on the back of every photograph or drawing submitted. The A. C. Gilbert Co. will not be responsible for entries miscarried in the mail or lost, and no photographs or drawings will be returned to contestants. All entries must be sent, postage prepaid, to The A. C. Gilbert Co., New Haven, Conn.
- 7 How Models Will Be Judged.** Prizes will be awarded for the best models of any piece of machinery, mechanical device, engineering project, building or structure made with any metal construction toy. By "best models" are meant those showing greatest ingenuity in design, that are made most realistically and show greatest skill in craftsmanship. No restriction is placed on the make or type of construction outfit used in building your model. Of course, because Erector is "real engineering" and enables you to reproduce great mechanical marvels most realistically, it would be the material with which to build the best models. But no one will be ruled out if they send in designs made from other materials.
- 8 Diploma of Merit.** Every boy who enters the contest will be made a member of the "Gilbert Engineering Institute for Boys" and will be awarded a handsome "Diploma of Merit" bearing his name.
- 9 Photographs to Be Published.** In addition to the award of the prizes, the best models will be selected for reproduction in the 1934 edition of the Erector Manual. Every boy whose model is accepted for the Manual will be entitled to have his picture shown with his model.
- 10 When Contest Closes.** The contest closes on April 30th, 1934, and all entries must be received at the offices of The A. C. Gilbert Company, New Haven, Conn., by that time.
- 11 Announcement of Prize Winners.** Prize winners will be announced June 15th, 1934, and prizes delivered as soon thereafter as possible.
- 12 Ties.** The decision of the judges will be final, but in the event of ties, each tying contestant will be awarded the full prize tied for.

**OFFICIAL
ANNOUNCEMENT**

of the great

ERECTOR
REG. U.S. PAT. OFF.

**PRIZE
CONTEST**

GRAND TOTAL OF 1021 PRIZES
CONTEST CLOSES APRIL 30th, 1934



OFFICIAL ENTRY BLANK

for the great new **ERECTOR** prize contest

IMPORTANT:—This blank, correctly filled out, must be sent in with all entries.

THE A. C. GILBERT CO., New Haven, Conn.

I wish to enter the new Erector Prize Contest and am submitting photograph (drawing) of the following models:
NAME AND BRIEF DESCRIPTION OF MODEL

1.
2.
3.

(Give detailed description of model on back of photograph or drawing)

Name.....
Street or R. F. D.....
City..... State.....
Date of Birth.....

Coupon and photograph or drawing of model must reach The A. C. Gilbert Co. in New Haven, Conn., not later than April 30th, 1934

FORM D1004—PRINTED IN U.S.A.

Hello Boys!

**WHY I AM GIVING AWAY
1021 PRIZES FOR
ENGINEERING MODELS**

"This is a banner year in Erector history, boys. You fellows who are getting my New Erector not only have the finest Erector ever made but also a chance to win a free trip, a Chevrolet automobile or one of over 1,000 other prizes.

"Erector has always been the world's greatest construction set, because it enables you to build marvelous engineering projects just like real engineers build them. But that is not all. This year I completely re-designed and modernized every one of my Erector sets, so that you can make better and more realistic models than ever before.

"Now I want to see what *you* can do with the New Erector—what wonderful new models you can make. That's the reason I am spending thousands of dollars on prizes for the best original models that can be made with Erector.

"This is the opportunity of a lifetime, boys. The thrilling fun of building with the New Erector—an opportunity to show your skill and a chance to win an exciting trip or one of the other big prizes.

"You will find the complete list of prizes, rules of the contest and an entry blank in this circular. Read every word carefully and then start building your models. And I hope you win the prize you want most."

Your friend,

A.C. Gilbert
President.

**THREE LEADING ENGINEERS WILL SEE YOUR MODELS AND
JUDGE THE CONTEST**

Here are the three men who will be the judges of the great Erector Prize Contest. The chances are their names are already known to you. Each one is an outstanding figure in the engineering world.



MR. LAWRENCE K. WEBER, Managing Editor of *Popular Mechanics Magazine*. A great editor of a great magazine, a man who has aided and encouraged thousands of engineers and inventors.

MR. SAMUEL W. DUDLEY, M.E., Chairman Department Mechanical Engineering, School of Engineering, Yale University. A practical engineer himself and one of the most inspiring teachers of engineering. Many of the boys of yesterday can trace their engineering success to first having had an Erector Set and later studying under Mr. Dudley.



Photo by Bachrach



JOHN F. STEVENS, LL.D., one of America's greatest railroad and canal engineers, who, as Chief Engineer for the Panama Canal, made the general plan for the Canal, was largely responsible for its marvelous locks, started the actual work of construction and demonstrated the certain success of the Canal.



A PERSONAL MESSAGE FROM THE PRESIDENT TO EVERY ERECTOR BOY ENGINEER

"Every red-blooded boy likes a contest—whether it is a race, a baseball game, a football game, or an event like my Erector Prize Contest. Because a contest puts a fellow on his mettle. It gives him a chance to show the world the kind of stuff he's made of.

"I know, too, that when you enter a contest, you want to be a winner. But remember this, boys. It takes more than day-dreaming or 'just hoping' to be a winner. You've got to have grit—stick-to-itiveness. You've got to make up your mind that you're going to see a thing through—that you won't let little discouragements lick you.

"When I went to Yale, one of my greatest ambitions was to be a pole vaulter. And more than that, I wanted to be the best pole vaulter Yale had ever turned over.

"Then came the first day of practice. Hundreds of men out on the field, and every one as eager as I was. What chance did I have competing against

a big squad like that, I asked myself. A lot of them were stronger than I was. They had better trained muscles—they had had more practice.

"Then I told myself I would just forget the other fellows and go ahead and do the best I could. So I kept on practicing—gradually going up to greater and greater heights—until one day I had the thrill of not only winning for my College but also establishing a new world's record. Later, I had the honor of representing the United States in the Olympic Games, again winning first place.

"I put in a lot of hard work before I reached my goal, but that's the way with winning anything worth while, boys.

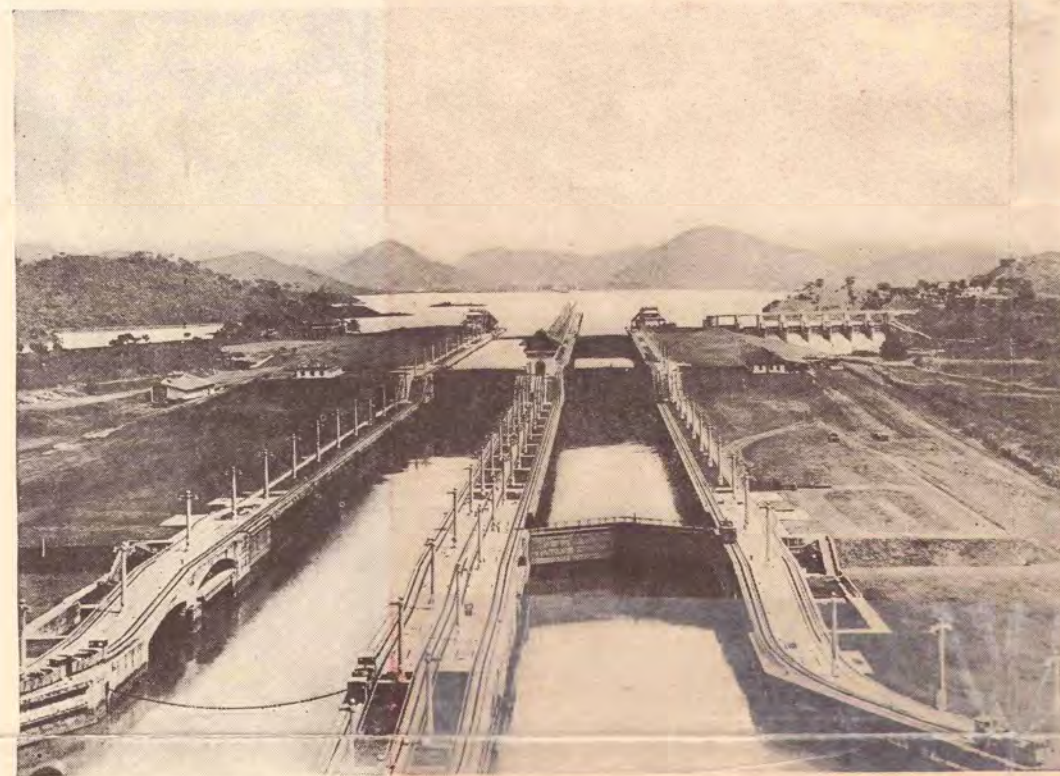
"My Erector Prize Contest is very much like a big college track meet or the Olympic Games. Some boys will say they are going to enter, and the next day will forget all about it. But you fellows who say you're going to enter and then stick to it—you're the kind who are real men as well as real Erector Engineers. That is why I am awarding a Diploma of Merit to every boy who enters the contest." Your friend,

A.C. Gilbert
President.

BOYS, THESE ARE PRIZES WORTH STRIVING FOR

FIRST PRIZE

Free trip to the Panama Canal or to the world-famous Empire State Building in New York or to Boulder Dam or to any other engineering project in the United States you want to see.



Panama Canal

One of the greatest engineering feats of all time, 50.72 miles long and costing over \$533,000,000.00. Here you will see mighty battleships and giant ocean liners lifted through a series of three locks to Gatun Lake, 85 feet above sea level. Here you will see famous Culebra Cut, once renowned for its dangerous slides and from which thousands of tons of earth were excavated. A trip packed full of thrills and excitement.

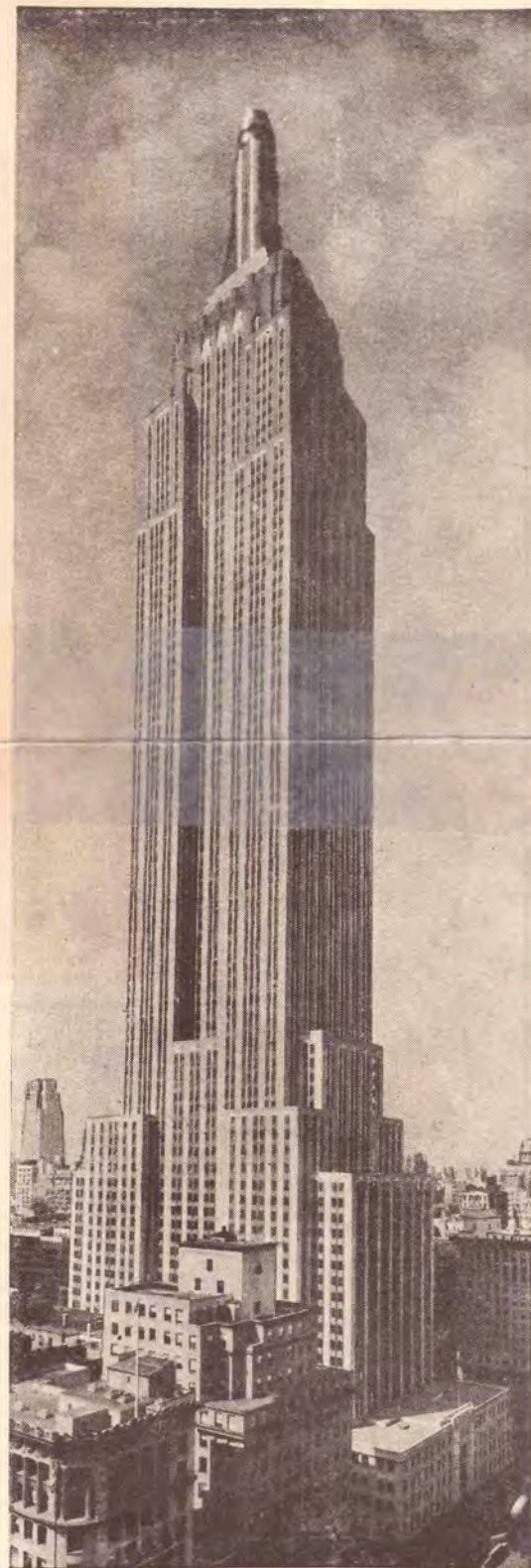


Empire State Building

"Higher than man has ever built before," 1250 feet high—containing 10,000,000 bricks, 6,000 windows, 75 miles of water pipe and weighing 303,000 tons. Here you can ride in elevators capable of traveling 1200 feet a minute—see the giant dirigible mooring mast—and look out from the observation tower to a distance of approximately 30 miles. A trip no one can forget.

Boulder Dam

Engineering history in the making. Here, in Black Canyon, engineering experts are erecting the highest dam ever constructed—a dam that will be 730 feet in height and will create a reservoir 115 miles in length and having a capacity of 30,500,000 acre-feet. Thrilling sights will greet your eyes at every turn. Tons of rock being blasted into the air. Mammoth steam shovels grabbing up earth and stone in huge gulps. Underground tunnels 56 feet in diameter and over 3 miles long.



SECOND PRIZE

Chevrolet Automobile

Famous for Economical Transportation



Picture yourself whizzing along the highways in a rakish, brand new Chevrolet . . . a mile a minute if you like. Smooth, powerful motor . . . beautiful streamline body . . . Fisher no-draft ventilation. A car that'll make you the envy of every boy in your neighborhood.

THIRD PRIZE—Shepherd Dog

(POLICE DOG) Arno von Maraldene



You may ask, from all the many breeds of dog, great and small, why have we selected the Shepherd Dog, Arno von Maraldene. First, because Arno is the finest selection from Mr. Gilbert's internationally famous Maraldene Kennels. He has selected this Shepherd Dog because he combines those qualities that go to uphold the position of the dog as "man's best friend;" because he represents to the ultimate degree, the blending of beauty with utility; because he has majesty of bearing, harmony of line, beauty of color and of marking, and agility and grace of movement; but, chiefly perhaps, because he is the possessor of a loyal heart and an unflinching courage, responsive to the will and pleasure of his master, reserved in the giving of friendship, but, having once given it, sincere to the core, gentle to the weak, fearless of the strong and faithful even unto death.

FOURTH and FIFTH PRIZES Ranger Bicycle



Here you are, boys! Ready to jump on for a hurried errand around the corner or equally ready to take a cross-country trip to a neighboring state. The electric headlight makes safe riding at night, and the tubular carrier on the rear will accommodate a lunch basket or your camp outfit. It rides so easily it almost runs itself. That is why the Ranger is the best liked bicycle in the market today. It has every improvement and item of equipment you could possibly desire.

PRIZES 14 to 35 Inclusive No. A Erector Locomotive Set



THE MILE-A-MINUTE No. A—Builds the giant locomotive and thirteen other models, including Pumping Station, Yard Engine and Air Compressing Machine. Contains feature parts such as engine frame, drive wheel, boiler section, cylinders, connecting rods, valve levers, cab and many others. Packed in red brass-bound chest with brass handle grips.

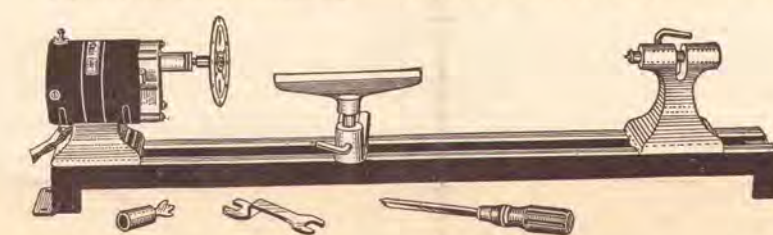
12th and 13th PRIZES—Gilbert No. 15 Chemistry Laboratory Set

SCIENTIST'S LABORATORY OUTFIT—Desk-type model with removable metal work tray. Assembled, stands 24 3/4" high, 25 1/2" long, 12 3/8" wide. Includes a Chemical Magic Show of tricks that will fascinate you. 99 Chemicals, minerals and items of equipment. Four illustrated manuals. Over 600 experiments in Chemistry, Glass-blowing, Chemical Magic and Mineralogy.

36th and 37th PRIZES—No. 9 Gilbert Bench Type Tool Chest

Similar in appearance to No. 17 Tool Bench. Assembled, this chest stands 35" high, over all; 31 1/2" long, 15 3/4" wide. Contains 27 useful tools including Saw, Plane, Chisel, Hammer, Mallet, Brace and Bit, Metal Square, etc., also Sapolin Speed Enamel and crack filler. Has wood vise grip. Finished in red and black with brass trimmings.

38th and 39th PRIZES—No. 796 Gilbert Electric Lathe

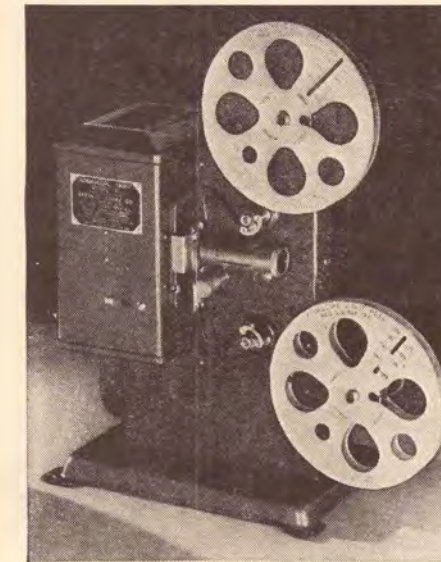


Just what every boy wants for his workshop. This practical, efficient, motor-driven Lathe for home or commercial use. Powered by 110-volt motor, A.C. or D.C. Improved compound gear train, die cast—very sturdy. Mounted on 30" metal bed, tail stock with dead center, slide rest-wrench, disc face plate and live center. Portable, motor detachable. With addition of key-operated 3-jaw chuck, 1/4" arbor and pistol grip handle, (purchased separately), is convertible into electric drilling outfit. With chuck attachment, round shank drills up to and including 1/4" diameter can be taken. Lathe turns wood up to 7" in diameter and 18" long. Grinding, polishing, sanding and buffing attachments purchased separately.

SIXTH PRIZE

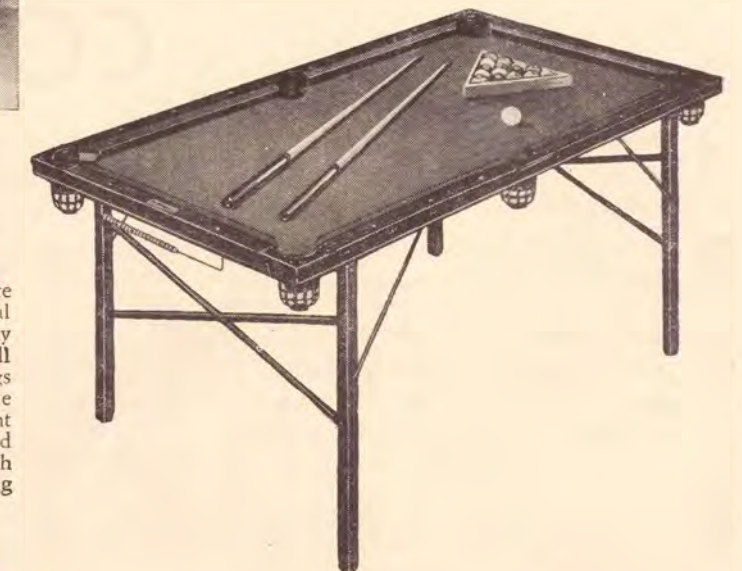
Ciné-Kodak (MOVIE CAMERA)

Boys—with this sturdy, pocket-size Model 20 Movie Camera you can make movies every bit as easily as you make snapshots. All you need to do is wind it up, point it, press the exposure button—and you're making movies. With it, from the start, you will make clear, sparkling movies of your family and friends, of sports, travels and vacations. It's a movie camera you'll be proud to call your own. It makes movies you'll be proud to see and show.



EIGHTH PRIZE Brunswick Pool Table

Look at this Brunswick Junior Playmate Table, Boys. It's built with substantial frame construction and has a rich mahogany finish. It has a special constructed bed, well supported by metal channel irons. The legs are rigidly braced to assure best possible playing conditions. Many other excellent appointments feature this table. Equipped with Junior Monarch Cushions, covered with cushion cloth. Complete with Playing Equipment.



ELEVENTH PRIZE

Gilbert No. 20 Chemistry Laboratory Set



This unrivaled scientific outfit is undoubtedly the finest thing of its kind ever offered the young scientist. Jammed full with a whole year's fun and entertainment, and scientific experiments of every description and kind. Handsome big blue brass-bound desk-type cabinet with removable metal work tray. More than 140 chemicals, mineral specimens and items of equipment. Five illustrated manuals giving complete information for experiments in Chemistry, Glass-blowing, Chemical Magic, Mineralogy and Hydraulic and Pneumatic Engineering. Desk, assembled, stands 27 1/2" high, 29 1/4" long and 12 3/8" wide.

40th and 41st PRIZES

Gilbert No. 10 Metal Tool Cabinet



HOUSEHOLD TREASURY CHEST. Packed in blue metal carrying case, brass handles, reinforced corners and suit-case catches. Contains 34 pieces including 16" cross-cut Saw, Key-hole Saw, Chisels, Drills, Plane, Millers Falls Hand Drill, Soldering Iron, Draw Shave, etc.